

2 x 3/2-directional valve, Series WV02

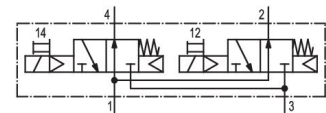
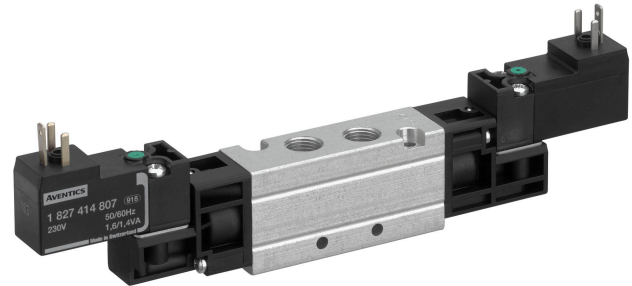
0820037028

Series
WV02

2024-02-15

Series WV02

The AVENTICS Series WV02 spool valves with anodized aluminium housing feature short switching times and low switching pressures, while offering low power consumption due to a seal with low friction co-efficient.



Technical data

| | |
|----------------------------------|-----------------------------------|
| Industry | Industrial |
| Activation | Electrically |
| Valve type | Spool valve, positive overlapping |
| Valve function | NO/NO |
| Sealing principle | Soft seal |
| Connection type | Pipe connection |
| Manual override | without detent |
| Compressed air connection input | G 1/8 |
| Compressed air connection output | G 1/8 |
| Nominal flow Qn | 600 l/min |
| Min. working pressure | 2.2 bar |
| Max. working pressure | 10 bar |
| Min. control pressure | 2.2 bar |
| Max. control pressure | 10 bar |
| Electrical connection type | Plug |

2 x 3/2-directional valve, Series WV02

Series
WV02

0820037028

2024-02-15

| | |
|----------------------------------|-------------------|
| Electrical connection size | ISO 15217, form C |
| Connector standard | ISO 15217 |
| Protection class with connection | IP65 |
| Operational voltage | 24 V AC |
| Operational voltage AC at 50 Hz | 24 V |
| Voltage tolerance AC 50 Hz | -10% / +10% |
| Operational voltage AC at 60 Hz | 24 V |
| Voltage tolerance AC 60 Hz | -10% / +10% |

| | |
|--------------------------|----------|
| Pilot | Internal |
| Coil width | 15 mm |
| Pilot valve width | 15 mm |
| Holding power AC 50 Hz | 1.6 VA |
| Holding power AC 60 Hz | 1.4 VA |
| Switch-on power AC 50 Hz | 2.2 VA |
| Switch-on power AC 60 Hz | 2 VA |

| | |
|----------------------|-------|
| Duty cycle | 100 % |
| Typ. switch-on time | 12 ms |
| Typ. switch-off time | 24 ms |

| | |
|------------------------------------|---------------------|
| Min. ambient temperature | 0 °C |
| Max. ambient temperature | 50 °C |
| Min. medium temperature | 0 °C |
| Max. medium temperature | 60 °C |
| Medium | Compressed air |
| Min. oil content of compressed air | 0 mg/m ³ |
| Max. oil content of compressed air | 5 mg/m ³ |
| Max. particle size | 5 µm |

| | |
|----------------------------|-----------|
| Mounting on manifold strip | PRS strip |
| Mounting screws | M3 |
| Weight | 0.16 kg |

Material

| | |
|---------------------------|---------------------------------------------|
| Housing material | Aluminum |
| Surface housing | anodized |
| Seal material | Hydrogenated acrylonitrile butadiene rubber |
| Material threaded bushing | Aluminum |

2 x 3/2-directional valve, Series WV02

0820037028

Series
WV02

2024-02-15

Material front plate

Polyamide

Part No.

0820037028

Technical information

The min. control pressure must be adhered to, since otherwise faulty switching and valve failure may result!

The pressure dew point must be at least 15 °C less than ambient and medium temperature and may not exceed 3 °C.

The oil content of compressed air must remain constant during the life cycle.

Use only the approved oils from AVENTICS. Further information can be found in the "Technical information" document (available in <https://www.emerson.com/en-us/support>).

2 x 3/2-directional valve, Series WV02

Series
WV02

0820037028

2024-02-15

Dimensions

