

5/3-directional valve, Series WV02

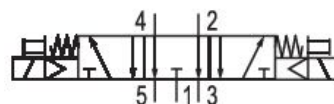
0820039033

Series
WV02

2024-02-15

Series WV02

The AVENTICS Series WV02 spool valves with anodized aluminium housing feature short switching times and low switching pressures, while offering low power consumption due to a seal with low friction co-efficient.



Technical data

Industry	Industrial
Activation	Electrically
Valve type	Spool valve, positive overlapping
Valve function	Exhausted Center
Sealing principle	Soft seal
Connection type	Pipe connection
Manual override	without detent
Compressed air connection input	G 1/8
Compressed air connection output	G 1/8
Nominal flow Qn	250 l/min
Min. working pressure	2.2 bar
Max. working pressure	10 bar
Min. control pressure	2.2 bar
Max. control pressure	10 bar
Electrical connection type	Plug

5/3-directional valve, Series WV02

Series
WV02

0820039033

2024-02-15

Electrical connection size	ISO 15217, form C
Connector standard	ISO 15217
Protection class with connection	IP65
Operational voltage	24 V AC
Operational voltage AC at 50 Hz	24 V
Voltage tolerance AC 50 Hz	-10% / +10%
Operational voltage AC at 60 Hz	24 V
Voltage tolerance AC 60 Hz	-10% / +10%

Pilot	Internal
Coil width	15 mm
Pilot valve width	15 mm
Holding power AC 50 Hz	1.6 VA
Holding power AC 60 Hz	1.4 VA
Switch-on power AC 50 Hz	2.2 VA
Switch-on power AC 60 Hz	2 VA

Duty cycle	100 %
Typ. switch-on time	9 ms
Typ. switch-off time	20 ms

Min. ambient temperature	0 °C
Max. ambient temperature	50 °C
Min. medium temperature	0 °C
Max. medium temperature	60 °C
Medium	Compressed air
Min. oil content of compressed air	0 mg/m ³
Max. oil content of compressed air	5 mg/m ³
Max. particle size	5 µm

Mounting on manifold strip	PRS strip
Mounting screws	M3
Weight	0.17 kg

Material

Housing material	Aluminum
Surface housing	anodized
Seal material	Hydrogenated acrylonitrile butadiene rubber
Material threaded bushing	Aluminum

5/3-directional valve, Series WV02

0820039033

Series
WV02

2024-02-15

Material front plate

Polyamide

Part No.

0820039033

Technical information

The min. control pressure must be adhered to, since otherwise faulty switching and valve failure may result!

The pressure dew point must be at least 15 °C less than ambient and medium temperature and may not exceed 3 °C.

The oil content of compressed air must remain constant during the life cycle.

Use only the approved oils from AVENTICS. Further information can be found in the "Technical information" document (available in <https://www.emerson.com/en-us/support>).

5/3-directional valve, Series WV02

0820039033

Series
WV02

2024-02-15

Dimensions

