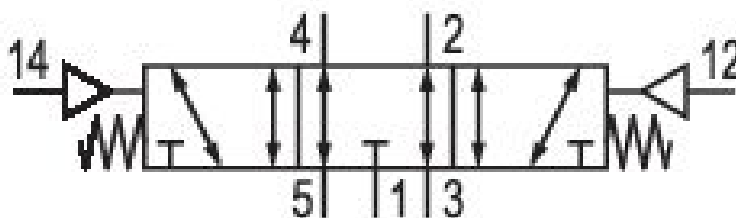


5/3-directional valve, Series WV02

0820239002

Series WV02

- $[[Q_n =]][[250 \dots 500] \text{ l/min}]$



Technical data

Industry
Industrial

Activation
Pneumatically

Nominal flow Q_n
250 l/min

Switching principle
5/3

Actuating control
Double Air Pilot

Compressed air connection output
G 1/8

Connection type
Pipe connection

Working pressure min.
-0.9 bar

Working pressure max
10 bar

Sealing principle
Soft Seal

Valve type
Spool valve, positive overlapping

Pilot
External

Control pressure min.
2.2 bar

Control pressure max.
10 bar

Min. ambient temperature
0 °C

Max. ambient temperature
80 °C

Min. medium temperature
0 °C

Max. medium temperature
80 °C

Medium
Compressed air

Max. particle size
5 µm

Oil content of compressed air min.
0 mg/m³

Oil content of compressed air max.
5 mg/m³

version pneumatic port
Exhausted Center

Mounting on manifold strip
PRS strip

Mounting screw
M3

Weight
0.11 kg

Housing material
Aluminum

Surface housing
anodized

Seal material
Acrylonitrile butadiene rubber
Hydrogenated nitrile butadiene rubber

Material, front cover
Polyamide

Material threaded bushing
Aluminum

Part No.
0820239002

Technical information

The min. control pressure must be adhered to, since otherwise faulty switching and valve failure may result!

The pressure dew point must be at least 15 °C under ambient and medium temperature and may not exceed 3 °C .

The oil content of compressed air must remain constant during the life cycle.

Use only the approved oils from AVENTICS. Further information can be found in the "Technical information" document (available in <https://www.emerson.com/en-us/support>).

Dimensions

