

5/3-directional valve, Series WV02

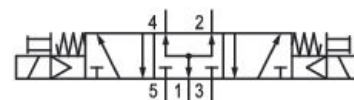
0820039063

Series
WV02

2024-02-15

Series WV02

The AVENTICS Series WV02 spool valves with anodized aluminium housing feature short switching times and low switching pressures, while offering low power consumption due to a seal with low friction co-efficient.



Technical data

Industry

Industrial

Activation

Electrically

Valve type

Spool valve, positive overlapping

Valve function

Pressurized Center

Sealing principle

Soft seal

Connection type

Pipe connection

Manual override

without detent

Compressed air connection input

G 1/8

Compressed air connection output

G 1/8

Nominal flow Qn

250 l/min

Min. working pressure

2.2 bar

Max. working pressure

10 bar

Min. control pressure

2.2 bar

Max. control pressure

10 bar

Electrical connection type

Plug

5/3-directional valve, Series WV02

Series
WV02

0820039063

2024-02-15

Electrical connection size	ISO 15217, form C
Connector standard	ISO 15217
Protection class with connection	IP65
Operational voltage	24 V AC
Operational voltage AC at 50 Hz	24 V
Voltage tolerance AC 50 Hz	-10% / +10%
Operational voltage AC at 60 Hz	24 V
Voltage tolerance AC 60 Hz	-10% / +10%

Pilot	Internal
Coil width	15 mm
Pilot valve width	15 mm
Holding power AC 50 Hz	1.6 VA
Holding power AC 60 Hz	1.4 VA
Switch-on power AC 50 Hz	2.2 VA
Switch-on power AC 60 Hz	2 VA

Duty cycle	100 %
Typ. switch-on time	9 ms
Typ. switch-off time	20 ms

Min. ambient temperature	0 °C
Max. ambient temperature	50 °C
Min. medium temperature	0 °C
Max. medium temperature	60 °C
Medium	Compressed air
Min. oil content of compressed air	0 mg/m ³
Max. oil content of compressed air	5 mg/m ³
Max. particle size	5 µm

Mounting on manifold strip	PRS strip
Mounting screws	M3
Weight	0.17 kg

Material

Housing material	Aluminum
Surface housing	anodized
Seal material	Hydrogenated acrylonitrile butadiene rubber
Material threaded bushing	Aluminum

5/3-directional valve, Series WV02

0820039063

Series
WV02

2024-02-15

Material front plate

Polyamide

Part No.

0820039063

Technical information

The min. control pressure must be adhered to, since otherwise faulty switching and valve failure may result!

The pressure dew point must be at least 15 °C less than ambient and medium temperature and may not exceed 3 °C.

The oil content of compressed air must remain constant during the life cycle.

Use only the approved oils from AVENTICS. Further information can be found in the "Technical information" document (available in <https://www.emerson.com/en-us/support>).

5/3-directional valve, Series WV02

0820039063

Series
WV02

2024-02-15

Dimensions

