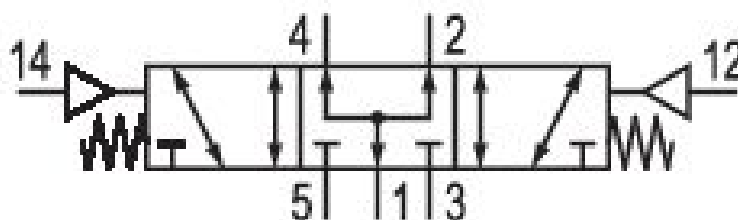


5/3-directional valve, Series WV02

0820239003

Series WV02

- $Q_n = [250 \dots 500]$ l/min



Technical data

Industry

Industrial

Activation

Pneumatically

Nominal flow Q_n

250 l/min

Switching principle

5/3

Actuating control

Double Air Pilot

Compressed air connection output

G 1/8

Connection type

Pipe connection

Working pressure min.

-0.9 bar

Working pressure max

10 bar

Sealing principle

Soft Seal

Valve type

Spool valve, positive overlapping

Pilot

External

Control pressure min.

2.2 bar

Control pressure max.

10 bar

Min. ambient temperature
0 °C

Max. ambient temperature
80 °C

Min. medium temperature
0 °C

Max. medium temperature
80 °C

Medium
Compressed air

Max. particle size
5 µm

Oil content of compressed air min.
0 mg/m³

Oil content of compressed air max.
5 mg/m³

version pneumatic port
Pressurized Center

Mounting on manifold strip
PRS strip

Mounting screw
M3

Weight
0.11 kg

Housing material
Aluminum

Surface housing
anodized

Seal material
Acrylonitrile butadiene rubber
Hydrogenated nitrile butadiene rubber

Material, front cover
Polyamide

Material threaded bushing
Aluminum

Part No.
0820239003

Technical information

The min. control pressure must be adhered to, since otherwise faulty switching and valve failure may result!

The pressure dew point must be at least 15 °C under ambient and medium temperature and may not exceed 3 °C .

The oil content of compressed air must remain constant during the life cycle.

Use only the approved oils from AVENTICS. Further information can be found in the "Technical information" document (available in <https://www.emerson.com/en-us/support>).

Dimensions

