

Graphical Configuration Software Helps Users Quickly Configure Application Solutions Using Sophisticated Controllers

COMPOSER® is Watlow's easy-to-use software for configuring and customizing controllers. Use it to optimize Watlow's F4T, D4T and EZ-ZONE® PM and RM controllers for specific applications. Task-specific views simplify all aspects of commissioning new controllers including managing the inputs and outputs from pluggable flex modules, setting up functions such as control loops and alarms and creating and editing profiles. COMPOSER software is included on the "Watlow Support Tools" DVD and available for download at www.watlow.com.

Features and Benefits

Function block diagram with live data and error indication

- Enables application-specific configuration of controllers
- Depicts the configuration visually making it easy to understand and explain to others
- Speeds up application testing and troubleshooting

Multi-language support

- Prevents errors by communicating with users in their own languages

System image files contain complete configuration

- Makes it fast and easy to duplicate settings from one system to another
- Simplifies sending configurations to remote sites
- Provides backup of settings to restore if settings are changed or controller is replaced

Dashboard view

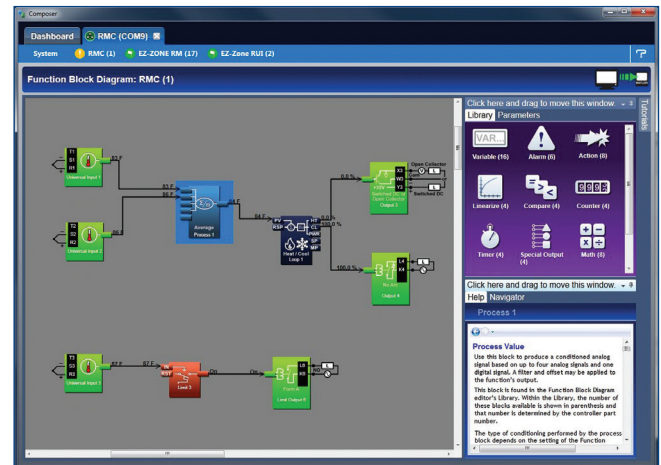
- Makes it easy to connect to controllers
- Clearly indicates when there are configuration errors that need to be addressed
- Allows downloading configuration files without allowing access to setup and configuration views

Opens and displays saved configuration image files

- Simplifies supporting remote users
- Makes it easy to inspect configuration files

Configurable interface

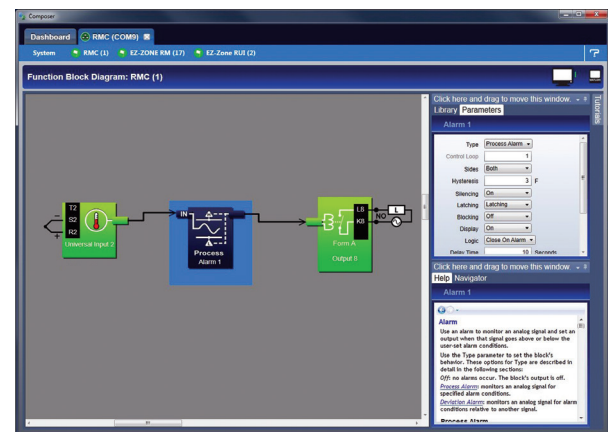
- Lets users adjust window sizes and positions to work efficiently



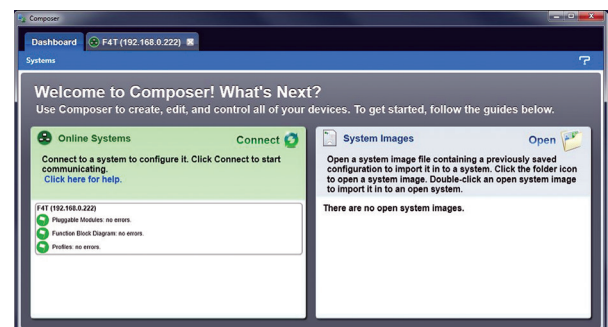
Integrated video tutorials and help

- Speeds up commissioning by demonstrating configuration steps
- Simplifies access to function block and parameter descriptions
- Reduces configuration errors
- Helps the user take full advantage of available features

Illustrations from COMPOSER



Function block diagram makes it easy to visualize application solutions.



Dashboard makes it easy to connect, indicates configuration errors and allows downloading configuration files without allowing access to setup.

Additional Features and Benefits for F4T

Profile editor

- Speeds up profile creation and editing
- Allows maintenance of profile list in controllers from a remote PC
- Makes it easy to move profiles from one controller to another
- Exports profiles to PC files for backup and portability

Fast, reliable Ethernet support

- Easily connects to one or more controllers
- Minimizes time to read and write configuration settings

Pluggable flex module management

- Simplifies configuration by clearly indicating which hardware is present
- Shortens commissioning by allowing user to configure controller for flex modules prior to installing them

Security configuration

- Allows OEMs and supervisors to limit permissions to specific features
- Controls access via COMPOSER and controller
- Prevents errors and reduces downtime by preventing undesired configuration changes

Calibration view with on-screen instructions and automation

- Reduces downtime by simplifying the calibration verification procedure

Features by Supported Product

Feature	F4T	D4T	EZ-ZONE			PM	RMA
			RM	RUI	PM	ST	PLUS
Connect via Ethernet	✓	✓					✓
Connect via USB							✓
Connect via 485			✓	✓	✓	✓	(1)
Function block diagram view	✓	✓	✓		✓		✓
System overview	✓	✓	✓	✓	✓	✓	✓
Device details view	✓	✓	✓	✓	✓	✓	✓
Save and import system images	✓	✓	✓	✓	✓	✓	✓
View image files offline	✓	✓	✓	✓	✓	✓	(1)
Personalization view	✓	✓	✓	✓	✓		(1)
Password security setup	✓	✓	✓		✓	✓	✓
Network view	✓	✓	✓	✓	✓		(2)
Ramp and soak profile editing	✓						
Calibration utility	✓	✓					
Pluggable modules view	✓	✓					
Data logging setup	✓	✓					(3)
Trending setup	✓	✓					

(1) Partially functional. To be completed in a future release.

(2) Supports setting up Ethernet and optional Modbus® RTU ports. Assembly setup coming in a future release. Functionality is limited via serial port.

(3) Coming in a future release.

Watlow®, COMPOSER® and EZ-ZONE® are registered trademarks of Watlow Electric Manufacturing Company.

Windows® is a registered trademark of the Microsoft Corporation.

Modbus® is a registered trademark of Schneider Automation, Incorporated.

Powered by Possibility

To be automatically connected to the nearest North American Technical Sales Office:

1-800-WATLOW2 • www.watlow.com

International Technical Sales Offices:

Austria +43 6244 20129 0
 China +86 21 3532 8532
 France +33 1 41 32 79 70
 Germany +49 7253 9400 0

India +91 40 6661 2700
 Italy +39 02 458 8841
 Japan +81 3 3518 6630
 Korea +82 2 2169 2600

Mexico +52 442 256 2200
 Singapore +65 6773 9488
 Spain +34 91 675 1292
 Taiwan +886 7 288 5168
 UK +44 115 964 0777

Specifications

Supported Products

Product	Minimum Version
PM PLUS	1.0
F4T	2.0
D4T	3
EZ-ZONE PM	15
EZ-ZONE RM: RMC, RME, RMS, RMH, RML	9
EZ-ZONE RM: RMA	5
EZ-ZONE RUI	6

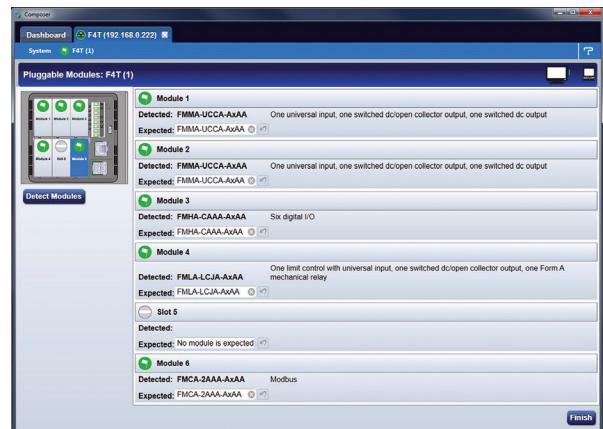
Compatible Operating Systems

- Windows® 10
- Windows® 8.1
- Windows® 7

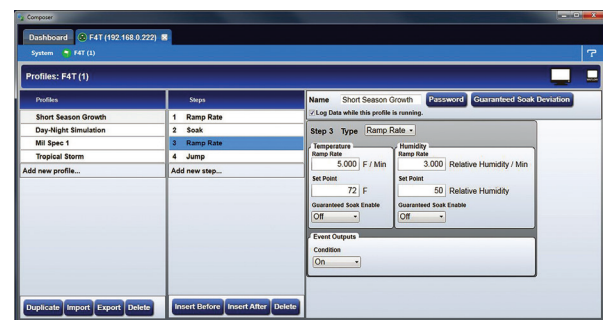
Minimum System Requirements

- Microprocessor: 1 gigahertz (GHz) or faster 32-bit or 64-bit
- Memory: 1 gigabyte (GB) RAM (32-bit) or 2 GB RAM (64-bit)
- Disk space: 250 megabytes (MB)
- Video: 1280 x 720 or higher
- Port for controller communications: Ethernet for F4T or EIA-485 half duplex (2-wire) for EZ-ZONE RM and PM

Illustrations from COMPOSER for F4T



Pluggable modules view simplifies configuration by showing hardware present.



Profile editor speeds up creating and editing profiles.