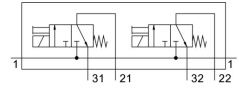
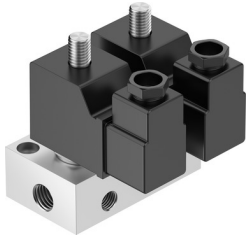



# Air solenoid valve BMCH-2-3-1/8

Part number: 6686

FESTO



 General operating condition

## Data sheet

| Feature                                  | Value  |
|--|--|
| Valve function                           | 2x3/2, closed, monostable  |
| Actuation type                           | Electrical   |
| Standard nominal flow rate               | 160 l/min  |
| Pneumatic working port                   | G1/8   |
| Operating pressure                       | -0.095 MPa ... 0.7 MPa   |
| Operating pressure                       | -0.95 bar ... 7 bar  |
| Structural design                        | Poppet valve with return spring                                    |
| Reset method                             | Mechanical spring  |
| Degree of protection                     | IP65   |
| Nominal width                            | 2.5 mm   |
| Sealing principle                        | Soft   |
| Max. no. of valve positions              | 2  |
| Type of control                          | Direct   |
| Symbol                                   | 00995421   |
| Pick-up power consumption                | 30 W   |
| Holding power consumption                | 22 W   |
| Operating medium                         | Compressed air as per ISO 8573-1:2010 [7:4:4]                      |
| Information on operating and pilot media | Operation with oil lubrication possible (required for further use) |
| LABS (PWIS) conformity                   | VDMA24364-B2-L   |
| Temperature of medium                    | -10 °C ... 60 °C   |
| Ambient temperature                      | -5 °C ... 40 °C  |
| Product weight                           | 680 g  |
| Electrical connection                    | Plug   |
| Type of mounting                         | With through-hole  |
| Pneumatic connection 1                   | G1/4   |
| Pneumatic connection 2                   | G1/8   |
| Pneumatic connection 3                   | G1/8   |
| Housing material                         | Aluminum   |