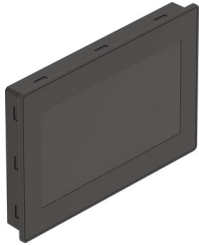


# Operator unit CDPX-X-B-W-10

Part number: 8155215

FESTO



 General operating condition

## Data sheet

Feature	Value
Width	282 mm
Installation depth	29 mm
Height	197 mm
Length	34 mm
Max. front panel thickness	5 mm
Real-time clock	Yes
Real-time clock deviation	<100 ppm at 25°C
Number of colors	64 k
Display	With backlighting
Display type	Color TFT
Display properties	Touchscreen
Display size	10.1"
Backup battery	Super capacitor
DC operating voltage range	10 V ... 32 V
Display resolution	1024x600 pixels
Nominal operating voltage DC	24 V
Current consumption at nominal operating voltage	0.38 A
Certification	c UL us - Listed (OL)
CE marking (see declaration of conformity)	As per EU EMC directive As per EU RoHS directive
UKCA marking (see declaration of conformity)	To UK instructions for EMC To UK RoHS instructions
LABS (PWIS) conformity	VDMA24364 zone III
Storage temperature	-20 °C ... 70 °C
Relative air humidity	5 - 85 % Non-condensing
Degree of protection	IP20 IP66
Note on degree of protection	IP 20 rear IP 66 front
Ambient temperature	0 °C ... 50 °C
Note on ambient temperature	for vertical mounting
Product weight	1000 g
Additional functions	RS232 communication function
Type of mounting	Front panel mounting
Note on materials	RoHS-compliant
Ethernet interface, connection type	Socket

<b>Feature</b>	<b>Value</b>
Ethernet interface, connection technology	RJ45
Ethernet interface, number of poles/wires	8
Ethernet interface, transmission rate	10/100 Mbit/s
Ethernet interface, function	Programming
USB interface, function	File transfer
USB-interface, connection type	Socket
USB interface	USB 2.0, type A
Programming software	Designer Studio
CPU data	512 MB RAM