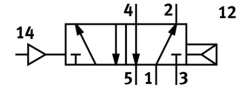
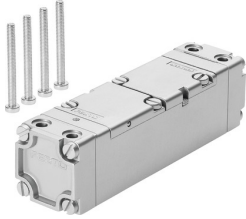


# Pneumatic valve CL-5/2-1/2

Part number: 5813

FESTO



[PDF](#) General operating condition

## Data sheet

| Feature                | Value              |
|------------------------|--------------------|
| Valve function         | 5/2, monostable    |
| Pneumatic working port | G1/2               |
| Operating pressure     | 1 bar ... 10 bar   |
| Symbol                 | 00991048           |
| Pilot pressure         | 2 bar ... 10 bar   |
| LABS (PWIS) conformity | VDMA24364 zone III |
| Pneumatic connection 1 | G1/2               |
| Pneumatic connection 2 | G1/2               |
| Pneumatic connection 3 | G1/2               |
| Pneumatic connection 4 | G1/2               |
| Pneumatic connection 5 | G1/2               |