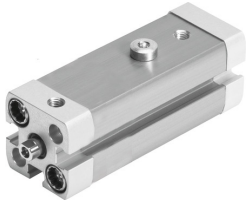


Swing clamp cylinder CLR-12-10-L-P-A

Part number: 535432

FESTO



 [General operating condition](#)

Data sheet

Feature	Value
Complete stroke	19 mm
Piston diameter	12 mm
Piston rod thread	M3
Swivel angle	90 deg +/- 4 deg
Clamping stroke	10 mm
Cushioning	Elastic cushioning rings/pads at both ends
Mounting position	Any
Structural design	Piston Piston rod Cylinder barrel
Position sensing	For proximity sensor
Swivel direction	Left
Symbol	00991217
Operating pressure	2 bar ... 10 bar
Mode of operation	Double-acting
Operating medium	Compressed air as per ISO 8573-1:2010 [7:4:4]
Information on operating and pilot media	Operation with oil lubrication possible (required for further use)
Corrosion resistance class (CRC)	2 - Moderate corrosion stress
LABS (PWIS) conformity	VDMA24364-B2-L
Ambient temperature	-10 °C ... 80 °C
Effective clamping force at 2 bar	12 N
Effective clamping force at 4 bar	23 N
Effective clamping force at 6 bar	34 N
Max. clamping finger screw tightening torque	1.2 Nm
Theoretical clamping force at 6 bar	51 N
Product weight	135 g
Type of mounting	Optionally: With through-hole With internal thread With accessories
Pneumatic connection	M5
Flange screws material	Steel Galvanized
Cover material	Wrought aluminum alloy Coated
Seals material	NBR TPE-U (PU)

Feature	Value
Housing material	Wrought aluminum alloy Smooth anodized
Piston rod material	High-alloy stainless steel
Material of cylinder barrel	Wrought aluminum alloy Smooth anodized