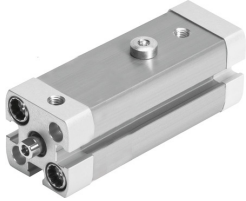


# Swing clamp cylinder CLR-12-20-R-P-A

Part number: 535433

FESTO



 [General operating condition](#)

## Data sheet

| Feature                                      | Value  |
|--|--|
| Complete stroke                              | 29 mm  |
| Piston diameter                              | 12 mm  |
| Piston rod thread                            | M3   |
| Swivel angle                                 | 90 deg +/- 4 deg   |
| Clamping stroke                              | 20 mm  |
| Cushioning                                   | Elastic cushioning rings/pads at both ends                                   |
| Mounting position                            | Any  |
| Structural design                            | Piston<br>Piston rod<br>Cylinder barrel                                      |
| Position sensing                             | For proximity sensor   |
| Swivel direction                             | Right  |
| Symbol                                       | 00991217   |
| Operating pressure                           | 2 bar ... 10 bar   |
| Mode of operation                            | Double-acting  |
| Operating medium                             | Compressed air as per ISO 8573-1:2010 [7:4:4]                                |
| Information on operating and pilot media     | Operation with oil lubrication possible (required for further use)           |
| Corrosion resistance class (CRC)             | 2 - Moderate corrosion stress  |
| LABS (PWIS) conformity                       | VDMA24364-B2-L   |
| Ambient temperature                          | -10 °C ... 80 °C   |
| Effective clamping force at 2 bar            | 12 N   |
| Effective clamping force at 4 bar            | 23 N   |
| Effective clamping force at 6 bar            | 34 N   |
| Max. clamping finger screw tightening torque | 1.2 Nm   |
| Theoretical clamping force at 6 bar          | 51 N   |
| Product weight                               | 160 g  |
| Type of mounting                             | Optionally:<br>With through-hole<br>With internal thread<br>With accessories |
| Pneumatic connection                         | M5   |
| Flange screws material                       | Steel<br>Galvanized  |
| Cover material                               | Wrought aluminum alloy<br>Coated   |
| Seals material                               | NBR<br>TPE-U(PU)   |

| <b>Feature</b>              | <b>Value</b>                              |
|-----------------------------|---|
| Housing material            | Wrought aluminum alloy<br>Smooth anodized |
| Piston rod material         | High-alloy stainless steel                |
| Material of cylinder barrel | Wrought aluminum alloy<br>Smooth anodized |