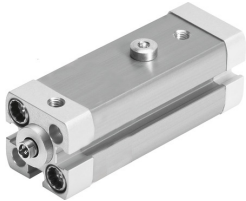


Swing clamp cylinder CLR-25-20-R-P-A-K11-R8

Part number: 535485

FESTO



 [General operating condition](#)

Data sheet

Feature	Value
Complete stroke	33 mm
Piston diameter	25 mm
Piston rod thread	M6
Swivel angle	90 deg +/- 3 deg
Clamping stroke	20 mm
Cushioning	Elastic cushioning rings/pads at both ends
Mounting position	Any
Structural design	Piston Piston rod Cylinder barrel
Position sensing	For proximity sensor
Swivel direction	Right
Symbol	00991217
Variants	Weld spatter protection Dust protection
Operating pressure	2 bar ... 10 bar
Mode of operation	Double-acting
Operating medium	Compressed air as per ISO 8573-1:2010 [7:4:4]
Information on operating and pilot media	Operation with oil lubrication possible (required for further use)
Corrosion resistance class (CRC)	2 - Moderate corrosion stress
LABS (PWIS) conformity	VDMA24364-B2-L
Ambient temperature	-10 °C ... 80 °C
Effective clamping force at 2 bar	63 N
Effective clamping force at 4 bar	127 N
Effective clamping force at 6 bar	188 N
Max. clamping finger screw tightening torque	12 Nm
Theoretical clamping force at 6 bar	227 N
Product weight	470 g
Type of mounting	Optionally: With through-hole With internal thread With accessories
Pneumatic connection	M5
Wiper material	PPS
Flange screws material	Steel Galvanized
Cover material	Wrought aluminum alloy Coated

Feature	Value
Seals material	NBR TPE-U(PU)
Housing material	Wrought aluminum alloy Smooth anodized
Piston rod material	Coated High-alloy stainless steel
Material of cylinder barrel	Wrought aluminum alloy Smooth anodized