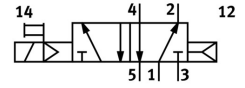
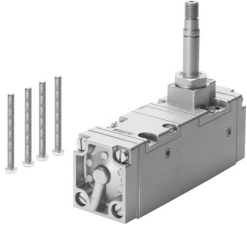


Air solenoid valve

CM-5/2-1/4-CH

Part number: 5960

FESTO



[PDF General operating condition](#)

Data sheet

Feature	Value
Valve function	5/2, monostable
Actuation type	Electrical
Standard nominal flow rate	1400 l/min
Pneumatic working port	Sub-base
Operating pressure	1.5 bar ... 10 bar
Reset method	Pneumatic spring
Nominal width	6.5 mm
Mounting position	Any
Manual override	Non-detenting
Type of control	Pilot-controlled
Symbol	00991049
Max. switching frequency	40 Hz
On switching time	28 ms
Operating medium	Compressed air as per ISO 8573-1:2010 [7:4:4]
Information on operating and pilot media	Operation with oil lubrication possible (required for further use)
LABS (PWIS) conformity	VDMA24364 zone III
Temperature of medium	-10 °C ... 60 °C
Type of mounting	On sub-base
Pilot air port 12	G1/8
Pilot air port 14	G1/8
Pneumatic connection 1	G1/4
Pneumatic connection 2	G1/4
Pneumatic connection 3	G1/4
Pneumatic connection 4	G1/4
Pneumatic connection 5	G1/4
Seals material	NBR
Housing material	Wrought aluminum alloy
Diaphragm material	PUR