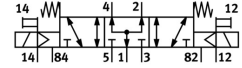
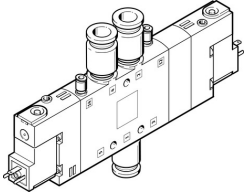


# Air solenoid valve CPE18-M3H-5/3BS-QS-10

Part number: 170336

FESTO



[General operating condition](#)

## Data sheet

| Feature                                      | Value  |
|--|--|
| Valve function                               | 5/3, pressurized                             |
| Actuation type                               | Electrical                                   |
| Width  | 18 mm  |
| Standard nominal flow rate                   | 1000 l/min                                   |
| Pneumatic working port                       | QS-10  |
| Operating voltage                            | 230V AC                                      |
| Operating pressure                           | -0.09 MPa ... 1 MPa                          |
| Operating pressure                           | -0.9 bar ... 10 bar                          |
| Structural design                            | Piston gate valve                            |
| Reset method                                 | Mechanical spring                            |
| Certification                                | c UL us - Recognized (OL)                    |
| Maritime classification                      | See certificate                              |
| CE marking (see declaration of conformity)   | As per EU low voltage directive              |
| UKCA marking (see declaration of conformity) | To UK instructions for electrical equipment  |
| Certificate issuing authority                | DNV-TAA000032X<br>UL MH19482                 |
| Degree of protection                         | IP65<br>With plug socket<br>as per IEC 60529 |
| Nominal width                                | 8 mm   |
| Exhaust air function                         | With flow control option                     |
| Sealing principle                            | Soft   |
| Mounting position                            | Any  |
| Manual override                              | Detenting via accessory<br>Non-detenting     |
| Type of control                              | Pilot-controlled                             |
| Pilot air supply port                        | External                                     |
| Flow direction                               | Reversible                                   |
| Symbol                                       | 00991031                                     |
| Valve position ID                            | Label holder                                 |
| Lap  | Overlap                                      |
| Pilot pressure MPa                           | 0.25 MPa ... 1 MPa                           |
| Pilot pressure                               | 2.5 bar ... 10 bar                           |
| Switching time off                           | 38 ms  |
| On switching time                            | 20 ms  |
| Duty cycle                                   | 100%   |
| Max. positive test pulse with 0 signal       | 3300 μs                                      |

| Feature                                  | Value  |
|--|--|
| Max. negative test pulse on 1 signal     | 3100 µs  |
| Coil characteristics                     | 230 V AC: 50/60 Hz, initial power 3.0 VA, holding power 2.4 VA                       |
| Permissible voltage fluctuations         | -15 % / +10 %  |
| Operating medium                         | Compressed air as per ISO 8573-1:2010 [7:4:4]  |
| Information on operating and pilot media | Operation with oil lubrication possible (required for further use)                   |
| Vibration resistance                     | Transport application test with severity level 2 as per FN 942017-4 and EN 60068-2-6 |
| Shock resistance                         | Shock test with severity level 2 as per FN 942017-5 and EN 60068-2-27                |
| Corrosion resistance class (CRC)         | 2 - Moderate corrosion stress  |
| LABS (PWIS) conformity                   | VDMA24364-B1/B2-L  |
| Temperature of medium                    | -5 °C ... 50 °C  |
| Pilot medium                             | Compressed air as per ISO 8573-1:2010 [7:4:4]  |
| Ambient temperature                      | -5 °C ... 50 °C  |
| Electrical connection                    | Form C   |
| Type of mounting                         | With through-hole  |
| Pilot exhaust air port 82                | M5   |
| Pilot exhaust air port 84                | M5   |
| Pilot air port 12                        | M5   |
| Pilot air port 14                        | M5   |
| Pneumatic connection 1                   | QS-10  |
| Pneumatic connection 2                   | QS-10  |
| Pneumatic connection 3                   | G1/4   |
| Pneumatic connection 4                   | QS-10  |
| Pneumatic connection 5                   | G1/4   |
| Note on materials                        | RoHS-compliant   |
| Seals material                           | NBR  |
| Housing material                         | Die-cast aluminum  |