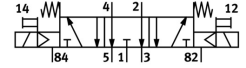
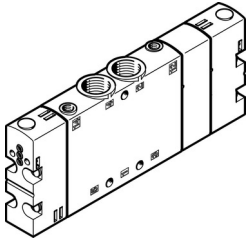


Basic valve CPE18-P1-5/3E-1/4

Part number: 550159

FESTO



[General operating condition](#)

Data sheet

| Feature | Value |
|--|--|
| Valve function | 5/3, exhausted |
| Actuation type | Via ISO 15218 pilot control interface |
| Width | 18 mm |
| Standard nominal flow rate | 1200 l/min |
| Pneumatic working port | G1/4 |
| Operating pressure | 0.25 MPa ... 1 MPa |
| Operating pressure | 2.5 bar ... 10 bar |
| Structural design | Piston gate valve |
| Reset method | Mechanical spring |
| Certification | c UL us - Recognized (OL) |
| Maritime classification | See certificate |
| CE marking (see declaration of conformity) | As per EU low voltage directive |
| UKCA marking (see declaration of conformity) | To UK instructions for electrical equipment |
| Certificate issuing authority | DNV-TAA000032X UL MH19482 |
| Nominal width | 8 mm |
| Exhaust air function | With flow control option |
| Sealing principle | Soft |
| Mounting position | Any |
| Manual override | Non-detenting |
| Type of control | Pilot-controlled |
| Pilot air supply port | Internal |
| Flow direction | Non-reversible |
| Symbol | 00991036 |
| Valve position ID | Label holder |
| Lap | Overlap |
| Switching time off | 34 ms |
| On switching time | 20 ms |
| Duty cycle | 100% |
| Max. positive test pulse with 0 signal | 3300 µs |
| Max. negative test pulse on 1 signal | 3100 µs |
| Permissible voltage fluctuations | -15 % / +10 % |
| Operating medium | Compressed air as per ISO 8573-1:2010 [7:4:4] |
| Information on operating and pilot media | Operation with oil lubrication possible (required for further use) |
| Vibration resistance | Transport application test with severity level 2 as per FN 942017-4 and EN 60068-2-6 |

| Feature | Value |
|----------------------------------|---|
| Shock resistance | Shock test with severity level 2 as per FN 942017-5 and EN 60068-2-27 |
| Corrosion resistance class (CRC) | 2 - Moderate corrosion stress |
| LABS (PWIS) conformity | VDMA24364-B1/B2-L |
| Temperature of medium | -5 °C ... 50 °C |
| Ambient temperature | -5 °C ... 50 °C |
| Product weight | 200 g |
| Type of mounting | With through-hole |
| Pilot exhaust air port 82 | M5 |
| Pilot exhaust air port 84 | M5 |
| Pilot air port 12 | M5 |
| Pilot air port 14 | M5 |
| Pneumatic connection 1 | G1/4 |
| Pneumatic connection 2 | G1/4 |
| Pneumatic connection 3 | G1/4 |
| Pneumatic connection 4 | G1/4 |
| Pneumatic connection 5 | G1/4 |
| Note on materials | RoHS-compliant |
| Seals material | NBR |
| Housing material | Die-cast aluminum |