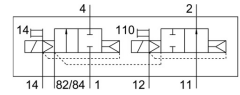
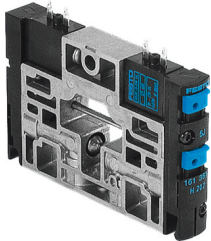


Air solenoid valve CPV14-M1H-2OLS-2GLS-K-1/8

Part number: 559653

FESTO



[PDF](#) General operating condition

Data sheet

| Feature | Value |
|--|--|
| Valve function | 2x2/2, open/closed, monostable |
| Actuation type | Electrical |
| Valve size | 14 mm |
| Standard nominal flow rate | 800 l/min |
| Pneumatic working port | G1/8 |
| Operating voltage | 24V DC |
| Operating pressure | -0.09 MPa ... 1 MPa |
| Operating pressure | -0.9 bar ... 10 bar |
| Structural design | Piston gate valve |
| Reset method | Pneumatic spring |
| Degree of protection | IP65 |
| Nominal width | 6 mm |
| Exhaust air function | Without flow control option |
| Sealing principle | Soft |
| Mounting position | Any |
| Manual override | Detenting Non-detenting |
| Type of control | Pilot-controlled |
| Pilot air supply port | External Internal |
| Flow direction | Non-reversible |
| Symbol | 00991802 |
| Lap | Overlap |
| Pilot pressure MPa | 0.3 MPa ... 0.8 MPa |
| Pilot pressure | 3 bar ... 8 bar |
| b-value | 0.37 |
| C value | 3.2 l/sbar |
| Switching time off | 16 ms |
| On switching time | 13 ms |
| Duty cycle | 100% in combination with holding current reduction |
| Electrical power consumption | 0.65 W |
| Max. positive test pulse with 0 signal | 1400 µs |
| Max. negative test pulse on 1 signal | 400 µs |
| Operating medium | Compressed air as per ISO 8573-1:2010 [7:4:4] |
| Information on operating and pilot media | Operation with oil lubrication possible (required for further use) |

| Feature | Value |
|----------------------------------|--|
| Vibration resistance | Transport application test with severity level 2 as per FN 942017-4 and EN 60068-2-6 |
| Shock resistance | Shock test with severity level 2 as per FN 942017-5 and EN 60068-2-27 |
| Corrosion resistance class (CRC) | 2 - Moderate corrosion stress |
| LABS (PWIS) conformity | VDMA24364-B1/B2-L |
| Storage temperature | -20 °C ... 40 °C |
| Temperature of medium | -5 °C ... 50 °C |
| Ambient temperature | -5 °C ... 50 °C |
| Product weight | 120 g |
| Type of mounting | With through-hole |
| Pilot air port 12/14 | Common port |
| Pilot exhaust air port 82/84 | Common port |
| Pneumatic connection 1 | Common port with pressure separation |
| Pneumatic connection 11 | Common port with pressure separation |
| Pneumatic connection 2 | G1/8 |
| Pneumatic port 3/5 combined | Common port |
| Pneumatic connection 4 | G1/8 |
| Note on materials | RoHS-compliant |
| Seals material | HNBR NBR |
| Housing material | Die-cast aluminum Brass POM PPS Steel |