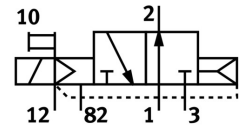
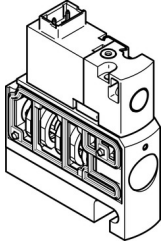



Air solenoid valve CPVSC1-M5H-N-T-M50

Part number: 547366

FESTO



 [General operating condition](#)

Data sheet

| Feature | Value |
|--|--|
| Valve function | 3/2, open, monostable |
| Actuation type | Electrical |
| Valve size | 10 mm |
| Standard nominal flow rate | 170 l/min |
| Pneumatic working port | M5 |
| Operating voltage | 12V DC |
| Operating pressure | -0.09 MPa ... 0.7 MPa |
| Operating pressure | -0.9 bar ... 7 bar |
| Structural design | Piston gate valve |
| Reset method | Pneumatic spring |
| Certification | c UL us - Recognized (OL) |
| Degree of protection | IP40 |
| Exhaust air function | Without flow control option |
| Sealing principle | Soft |
| Mounting position | Any |
| Manual override | Non-detenting |
| Type of control | Pilot-controlled |
| Pilot air supply port | External |
| Flow direction | Non-reversible |
| Symbol | 00991402 |
| Lap | Overlap |
| Pilot pressure MPa | 0.3 MPa ... 0.7 MPa |
| Pilot pressure | 3 bar ... 7 bar |
| Switching time off | 10 ms |
| On switching time | 10 ms |
| Max. positive test pulse with 0 signal | 500 µs |
| Max. negative test pulse on 1 signal | 400 µs |
| Coil characteristics | 12 V DC; 1.0 W |
| Operating medium | Compressed air as per ISO 8573-1:2010 [7:4:4] |
| Information on operating and pilot media | Operation with oil lubrication possible (required for further use) |
| Vibration resistance | Transport application test with severity level 2 as per FN 942017-4 and EN 60068-2-6 |
| Shock resistance | Shock test with severity level 2 as per FN 942017-5 and EN 60068-2-27 |
| Corrosion resistance class (CRC) | 1 - Low corrosion stress |
| LABS (PWIS) conformity | VDMA24364-B2-L |
| Temperature of medium | -5 °C ... 50 °C |

| Feature | Value |
|------------------------------|-------------------|
| Ambient temperature | -5 °C ... 50 °C |
| Product weight | 30.5 g |
| Electrical connection | 2-pin Plug |
| Type of mounting | With through-hole |
| Pilot exhaust air port 82/84 | Common port |
| Pneumatic connection 1 | Common port |
| Pneumatic connection 2 | M5 |
| Pneumatic port 3/5 combined | Common port |
| Pneumatic connection 4 | M5 |
| Note on materials | RoHS-compliant |
| Seals material | NBR |
| Housing material | Die-cast aluminum |