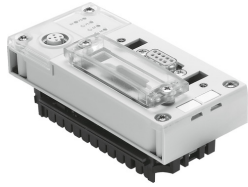



# Bus node CPX-FB13

Part number: 195740

FESTO



 General operating condition

## Data sheet

| Feature  | Value   |
|--|---|
| Protocol   | Profibus DP   |
| Dimensions W x L x H                                       | (incl. interlinking block)<br>50 mm x 107 mm x 50 mm  |
| Product weight   | 115 g   |
| Ambient temperature  | -5 °C ... 50 °C   |
| Storage temperature  | -20 °C ... 70 °C  |
| Degree of protection                                       | IP65<br>IP67  |
| Corrosion resistance class (CRC)                           | 1 - Low corrosion stress  |
| LABS (PWIS) conformity                                     | VDMA24364-B2-L  |
| Housing material   | PA-reinforced<br>PC   |
| LED display (product-specific)                             | M: Modify, parameterization<br>PL: load supply<br>PS: electronics supply, sensor supply<br>SF: system fault   |
| LED display (bus-specific)                                 | BF: bus fault   |
| Device-specific diagnostics                                | Channel-oriented and module-oriented diagnostics<br>Undervoltage of modules<br>Diagnostic memory  |
| Control elements   | DIL switch  |
| Fieldbus interface   | 2x M12x1, 5-pin, B-coded<br>Sub-D socket, 9-pin<br>Customizable Sub-D plug  |
| Max. address capacity inputs                               | 64 byte   |
| Max. address capacity outputs                              | 64 byte   |
| Parameterization   | Diagnostic behavior<br>Fail-safe response<br>forcing of channels<br>Signal setup<br>System parameter  |
| Baud rate  | 96 ... 12000 kbit/s   |
| Configuration support                                      | GSD file  |
| Additional functions                                       | Acyclic data access via "DPV1"<br>Channel-based diagnostics via fieldbus<br>Start-up parameterization in plain text via fieldbus<br>System status can be indicated via process data<br>Additional diagnostic interface for operator units |
| DC operating voltage range                                 | 18 V ... 30 V   |
| Nominal operating voltage DC                               | 24 V  |
| Intrinsic current consumption at nominal operating voltage | Typ. 200 mA   |

| Feature             | Value   |
|---------------------|---|
| Communication types | DPV0: cyclic communication<br>DPV1: acyclic communication |