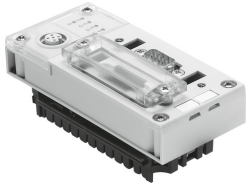


Bus node CPX-FB14

Part number: 526174



 General operating condition

Data sheet

Feature	Value
Protocol	CANopen
Dimensions W x L x H	(incl. interlinking block) 50 mm x 107 mm x 50 mm
Product weight	115 g
Ambient temperature	-5 °C ... 50 °C
Storage temperature	-20 °C ... 70 °C
Degree of protection	IP65 IP67
Corrosion resistance class (CRC)	1 - Low corrosion stress
LABS (PWIS) conformity	VDMA24364-B2-L
Housing material	PA-reinforced PC
LED display (product-specific)	M: Modify, parameterization PL: load supply PS: electronics supply, sensor supply SF: system fault
LED display (bus-specific)	IO: I/O status MS: module status NS: network status
Device-specific diagnostics	Channel-oriented and module-oriented diagnostics Undervoltage of modules Diagnostic memory
Control elements	DIL switch
Fieldbus interface	2x M12x1, 5-pin Sub-D socket, 9-pin Terminal strip, 5-pin Customizable Sub-D plug
Max. address capacity inputs	32 byte
Max. address capacity outputs	32 byte
Parameterization	Diagnostic behavior Fail-safe response forcing of channels Signal setup System parameter
Baud rate	125, 250, 500 and 1000 kbit/s
Configuration support	EDS file
Additional functions	Acyclic data access via "SDO" Channel-based diagnostics via fieldbus Start-up parameterization in plain text via fieldbus System status can be indicated via process data Additional diagnostic interface for operator units
DC operating voltage range	18 V ... 30 V

Feature	Value
Nominal operating voltage DC	24 V
Intrinsic current consumption at nominal operating voltage	Typ. 200 mA