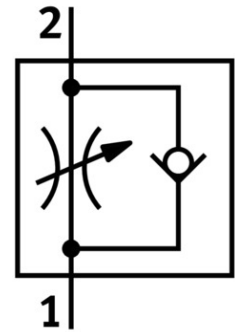


One-way flow control valve CRGRLA-3/8-B

Part number: 161406

FESTO



[PDF](#) General operating condition

Data sheet

Feature	Value
Valve function	Flow control non-return function
Pneumatic connection 1	G3/8
Pneumatic connection 2	G3/8
Actuation type	Manual
Adjusting element	Slotted screw
Type of mounting	Screw-in
Standard nominal flow rate in flow control direction	1450 l/min
Standard nominal flow rate in non-return direction	970 l/min ... 1600 l/min
Operating pressure	0.03 MPa ... 1 MPa
Operating pressure	0.3 bar ... 10 bar
Operating pressure	4.35 psi ... 145 psi
Ambient temperature	-20 °C ... 80 °C
Maritime classification	See certificate
Explosion prevention and protection	Observe the information on the certificate Zone 1 (ATEX) Zone 2 (ATEX) Zone 21 (ATEX) Zone 22 (ATEX)
Mounting position	Any
Symbol	00991452
Rotatability	360 deg/continuous swiveling not permissible
Standard flow rate in flow control direction 6 → 0 bar	2515 l/min
Standard flow rate in non-return direction at 6 → 0 bar	2095 l/min ... 2665 l/min
Operating medium	Compressed air as per ISO 8573-1:2010 [7:4:4]
Information on operating and pilot media	Operation with oil lubrication possible (required for further use)
LABS (PWIS) conformity	VDMA24364-B2-L
Suitability for the production of Li-ion batteries	Metals with more than 1% by mass of copper, zinc or nickel by mass are excluded from use. Exceptions are nickel in steel, chemically nickel-plated surfaces, printed circuit boards, cables, electrical plug connectors and coils
Cleanroom class	Class 4 according to ISO 14644-1

Feature	Value
Storage temperature	-10 °C ... 40 °C
For use in the food industry	See supplementary material information
Temperature of medium	-10 °C ... 60 °C
Nominal width	8.5 mm
Max. tightening torque	20 Nm
Permissible actuation moment, adjusting screw	2 Nm
Product weight	126.9 g
Note on materials	RoHS-compliant
Seals material	FPM PVC
Hollow bolt material	High-alloy steel
Material of adjusting screw	High-alloy stainless steel
Swivel joint material	High-alloy stainless steel