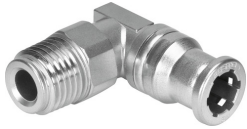


Push-in L-fitting CRQSL-1/2-12

Part number: 162878

FESTO



 General operating condition

Data sheet

Feature	Value
Size	Standard
Nominal width	7.9 mm
Mounting position	Any
Design	L-shape
Pack size	1
Structural design	Push-pull principle
Operating pressure for entire temperature range	-0.095 MPa ... 1 MPa
Operating pressure for entire temperature range	-0.95 bar ... 10 bar
Operating pressure for entire temperature range	-13.775 psi ... 145 psi
Information on operating pressure	Water: max. 0.6 MPa at max. 50 °C
Operating medium	Compressed air as per ISO 8573-1:2010 [7:-:-] Water (liquid, ice-free)
Information on operating and pilot media	Operation with oil lubrication possible
Corrosion resistance class (CRC)	4 - Particularly high corrosion stress
LABS (PWIS) conformity	VDMA24364-B1/B2-L
For use in the food industry	See supplementary material information
Ambient temperature	-15 °C ... 120 °C
Product weight	85 g
Usable connector cables	PFAN
Type of mounting	External hexagon, AF 22
Pneumatic connection 1	External thread R1/2
Pneumatic connection 2	for pneumatic tubing outside diameter 12 mm
Material of screwed plug	High-alloy stainless steel
Note on materials	RoHS-compliant
Housing material	High-alloy stainless steel
Releasing ring material	High-alloy stainless steel
Material of tubing seal	FPM
Material of tube retaining claw	High-alloy stainless steel
Thrust ring material	High-alloy stainless steel