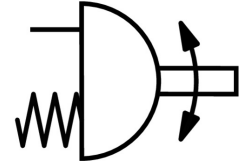
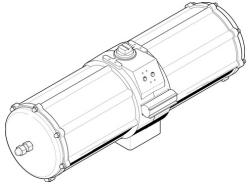


Quarter turn actuator DAPS-2880-090-RS4-F16

Part number: 549696

FESTO



 [General operating condition](#)

Data sheet

Feature	Value
Size of valve actuator	2880
Flange hole pattern	F16
Swivel angle	90 deg
End-position adjusting range at 0°	-5 deg ... 5 deg
End-position adjusting range at nominal swivel angle	85 deg ... 95 deg
Depth shaft connection	49.5 mm
Standard connection for valve	ISO 5211
Cushioning	No cushioning
Mounting position	Any
Mode of operation	Single-acting
Structural design	Scotch yoke system
Position sensing	None
Closing direction	Clockwise closing
Symbol	00991266
Valve connection conforms to standard	VDI/VDE 3845 (NAMUR)
Safety integrity level (SIL)	Up to SIL 2 low demand mode
Connection pressure for spring force	0.56 MPa
Connection pressure for spring force	5.6 bar
Operating pressure	0.56 MPa ... 0.84 MPa
Operating pressure	5.6 bar ... 8.4 bar
Nominal operating pressure	0.56 MPa
Nominal operating pressure	5.6 bar
Max. swivel frequency at 6 bar	1 Hz
CE marking (see declaration of conformity)	as per EU explosion protection directive (ATEX)
UKCA marking (see declaration of conformity)	acc. to UK EX instructions
Explosion prevention and protection	Zone 1 (ATEX) Zone 2 (ATEX) Zone 21 (ATEX) Zone 22 (ATEX)
Certificate issuing authority	German Technical Control Board North (TÜV Nord) 212170801
ATEX category gas	II 2G
ATEX category for dust	II 2D
Type of ignition protection for gas	Ex h IIC T6...T3 Gb X
Type of (ignition) protection for dust	Ex h IIIC T85°C...T200°C Db X
Explosive ambient temperature	-20°C ≤ Ta ≤ +60°C

Feature	Value
Operating medium	Compressed air as per ISO 8573-1:2010 [7:4:4]
Information on operating and pilot media	Operation with oil lubrication possible (required for further use)
Corrosion resistance class (CRC)	3 - High corrosion stress
LABS (PWIS) conformity	VDMA24364-B1/B2-L
Ambient temperature	-20 °C ... 80 °C
Torque at nominal operating pressure and 0° swivel angle	2880 Nm
Torque at nominal operating pressure and 50° swivel angle	1440 Nm
Torque at nominal operating pressure and 90° swivel angle	1920 Nm
Note about the torque	The actuator's operating torque must not be higher than the maximum permissible torque listed in ISO 5211, based on the size of the mounting flange and the coupling.
Spring return torque at 0° swivel angle	1920 Nm
Spring return torque with 50° swivel angle	1440 Nm
Spring return torque with 90° swivel angle	2880 Nm
Spring force	4
Air consumption at 6 bar per cycle 0°-nominal swivel angle-0°	147 l
Product weight	117000 g
Shaft connection	T46
Pneumatic connection	G3/8
Note on materials	RoHS-compliant
Cover material	Wrought aluminum alloy
Seals material	FPM NBR PUR
Housing material	Wrought aluminum alloy
Material of screws	High-alloy steel
Shaft material	High-alloy steel
Material number for shaft	1.4305