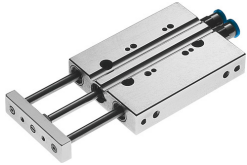



Mini guided actuator DFC-10-20-P-A-KF

Part number: 189476

FESTO



 [General operating condition](#)

Data sheet

Feature	Value
Distance of centre of gravity of payload to yoke plate xs	15 mm
Stroke	20 mm
Piston diameter	10 mm
Drive unit operating mode	Yoke
Cushioning	Elastic cushioning rings/pads at both ends
Mounting position	Any
Guide	Recirculating ball bearing guide
Structural design	Guide
Position sensing	For proximity sensor
Symbol	00991737
Operating pressure	0.1 MPa ... 1 MPa
Operating pressure	1 bar ... 10 bar
Max. speed	1 m/s
Mode of operation	Double-acting
Operating medium	Compressed air as per ISO 8573-1:2010 [7:4:4]
Information on operating and pilot media	Operation with oil lubrication possible (required for further use)
Corrosion resistance class (CRC)	0 - No corrosion stress
LABS (PWIS) conformity	VDMA24364-B2-L
Ambient temperature	-5 °C ... 60 °C
Impact energy in the end positions	0.05 J
Max. torque Mx	0.3 Nm
Max. payload as a function of the stroke at defined distance xs	9.8 N
Theoretical force at 6 bar, retracting	35 N
Theoretical force at 6 bar, advancing	47 N
Moving mass	27.2 g
Moving mass at 0 mm stroke	27.2 g
Additional moving mass per 10 mm stroke	7.2 g
Product weight	117 g
Pneumatic connection	M5
Cover material	Wrought aluminum alloy
Seals material	NBR
Housing material	Wrought aluminum alloy
Piston rod material	High-alloy stainless steel