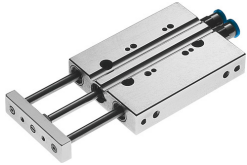


Mini guided actuator DFC-10-25-P-A-GF

Part number: 189471

FESTO



 [General operating condition](#)

Data sheet

| Feature | Value |
|---|--|
| Distance of centre of gravity of payload to yoke plate xs | 15 mm |
| Stroke | 25 mm |
| Piston diameter | 10 mm |
| Drive unit operating mode | Yoke |
| Cushioning | Elastic cushioning rings/pads at both ends |
| Mounting position | Any |
| Guide | Sliding guide |
| Structural design | Guide |
| Position sensing | For proximity sensor |
| Symbol | 00991737 |
| Operating pressure | 0.1 MPa ... 1 MPa |
| Operating pressure | 1 bar ... 10 bar |
| Max. speed | 1 m/s |
| Mode of operation | Double-acting |
| Operating medium | Compressed air as per ISO 8573-1:2010 [7:4:4] |
| Information on operating and pilot media | Operation with oil lubrication possible (required for further use) |
| Corrosion resistance class (CRC) | 2 - Moderate corrosion stress |
| LABS (PWIS) conformity | VDMA24364-B2-L |
| Ambient temperature | -5 °C ... 60 °C |
| Impact energy in the end positions | 0.05 J |
| Max. torque Mx | 0.4 Nm |
| Max. payload as a function of the stroke at defined distance xs | 12.2 N |
| Theoretical force at 6 bar, retracting | 35 N |
| Theoretical force at 6 bar, advancing | 47 N |
| Moving mass | 27.2 g |
| Moving mass at 0 mm stroke | 27.2 g |
| Additional moving mass per 10 mm stroke | 7.2 g |
| Product weight | 125 g |
| Pneumatic connection | M5 |
| Cover material | Wrought aluminum alloy |
| Seals material | NBR |
| Housing material | Wrought aluminum alloy |
| Piston rod material | High-alloy stainless steel |