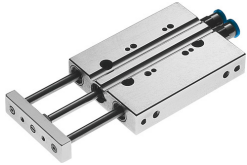


Mini guided actuator DFC-6-15-P-A-KF

Part number: 189463

FESTO



 [General operating condition](#)

Data sheet

Feature	Value
Distance of centre of gravity of payload to yoke plate xs	10 mm
Stroke	15 mm
Piston diameter	6 mm
Drive unit operating mode	Yoke
Cushioning	Elastic cushioning rings/pads at both ends
Mounting position	Any
Guide	Recirculating ball bearing guide
Structural design	Guide
Position sensing	For proximity sensor
Symbol	00991737
Operating pressure	0.15 MPa ... 1 MPa
Operating pressure	1.5 bar ... 10 bar
Max. speed	1 m/s
Mode of operation	Double-acting
Operating medium	Compressed air as per ISO 8573-1:2010 [7:4:4]
Information on operating and pilot media	Operation with oil lubrication possible (required for further use)
Corrosion resistance class (CRC)	0 - No corrosion stress
LABS (PWIS) conformity	VDMA24364-B2-L
Ambient temperature	-5 °C ... 60 °C
Impact energy in the end positions	0.008 J
Max. torque Mx	0.1 Nm
Max. payload as a function of the stroke at defined distance xs	4.6 N
Theoretical force at 6 bar, retracting	12.5 N
Theoretical force at 6 bar, advancing	17 N
Moving mass	8.8 g
Moving mass at 0 mm stroke	8.8 g
Additional moving mass per 10 mm stroke	2.8 g
Product weight	39 g
Pneumatic connection	M3
Cover material	Wrought aluminum alloy
Seals material	NBR
Housing material	Wrought aluminum alloy
Piston rod material	High-alloy stainless steel