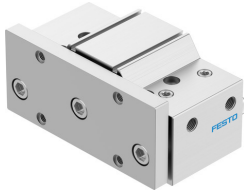



# Guided actuator DFM-100-25-P-A-KF

Part number: 170967

FESTO



 [General operating condition](#)

## Data sheet

Feature	Value
Distance of centre of gravity of payload to yoke plate xs	125 mm
Stroke	25 mm
Piston diameter	100 mm
Drive unit operating mode	Yoke
Cushioning	Elastic cushioning rings/pads at both ends
Mounting position	Any
Guide	Recirculating ball bearing guide
Structural design	Guide
Position sensing	For proximity sensor
Symbol	00991737
Operating pressure	0.05 MPa ... 1 MPa
Operating pressure	0.5 bar ... 10 bar
Max. speed	0.4 m/s
Mode of operation	Double-acting
Operating medium	Compressed air as per ISO 8573-1:2010 [7:4:4]
Information on operating and pilot media	Operation with oil lubrication possible (required for further use)
Corrosion resistance class (CRC)	0 - No corrosion stress
LABS (PWIS) conformity	VDMA24364-B1/B2-L
Ambient temperature	-5 °C ... 60 °C
Impact energy in the end positions	1 J
Max. force Fy	3043 N
Max. force Fy static	5400 N
Max. force Fz	3043 N
Max. force Fz static	5400 N
Max. torque Mx	286.02 Nm
Max. static moment Mx	507.6 Nm
Max. torque My	76.06 Nm
Max. static moment My	135 Nm
Max. torque Mz	76.06 Nm
Max. static moment Mz	135 Nm
Max. permissible torque load Mx as a function of the stroke	60.83 Nm
Max. payload as a function of the stroke at defined distance xs	332 N
Theoretical force at 6 bar, retracting	4418 N
Theoretical force at 6 bar, advancing	4712 N
Moving mass	5696 g
Product weight	10520 g

<b>Feature</b>	<b>Value</b>
Center of gravity of the moving mass as a function of the stroke	35 mm
Alternative connections	See product drawing
Pneumatic connection	G3/8
Note on materials	RoHS-compliant
Cover material	Wrought aluminum alloy
Seals material	NBR
Housing material	Wrought aluminum alloy
Piston rod material	High-alloy stainless steel