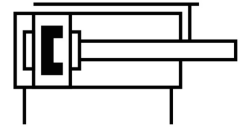
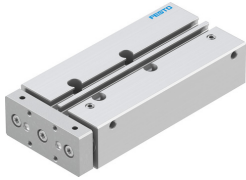



# Guided actuators DFM-12-80-P-A-KF-F1A

Part number: 8118637

FESTO



 [General operating condition](#)

## Data sheet

| Feature   | Value   |
|---|---|
| Distance of centre of gravity of payload to yoke plate xs | 25 mm   |
| Stroke  | 80 mm   |
| Piston diameter   | 12 mm   |
| Drive unit operating mode                                 | Yoke  |
| Cushioning  | Elastic cushioning rings/pads at both ends  |
| Mounting position   | Any   |
| Guide   | Recirculating ball bearing guide  |
| Structural design   | Guide   |
| Position sensing  | For proximity sensor  |
| Symbol  | 00991737  |
| Variants  | Metals with copper, zinc or nickel by mass as main constituent are excluded from use. Exceptions are nickel in steel, chemically nickel-plated surfaces, printed circuit boards, cables, electrical plug connectors and coils.    |
| Operating pressure  | 0.2 MPa ... 1 MPa   |
| Operating pressure  | 2 bar ... 10 bar  |
| Max. speed  | 0.8 m/s   |
| Mode of operation   | Double-acting   |
| Operating medium  | Compressed air as per ISO 8573-1:2010 [7:4:4]   |
| Information on operating and pilot media                  | Operation with oil lubrication possible (required for further use)  |
| Corrosion resistance class (CRC)                          | 0 - No corrosion stress   |
| LABS (PWIS) conformity                                    | VDMA24364-B1/B2-L   |
| Suitability for the production of Li-ion batteries        | Metals with more than 1% by mass of copper, zinc or nickel by mass are excluded from use. Exceptions are nickel in steel, chemically nickel-plated surfaces, printed circuit boards, cables, electrical plug connectors and coils |
| Cleanroom class   | Class 7 according to ISO 14644-1  |
| Ambient temperature                                       | -5 °C ... 60 °C   |
| Impact energy in the end positions                        | 0.07 J  |
| Max. force Fy   | 375 N   |
| Max. force Fy static                                      | 343 N   |
| Max. force Fz   | 375 N   |
| Max. force Fz static                                      | 343 N   |
| Max. torque Mx  | 7.68 Nm   |
| Max. static moment Mx                                     | 7.04 Nm   |
| Max. torque My  | 3.56 Nm   |
| Max. static moment My                                     | 3.26 Nm   |

| <b>Feature</b>   | <b>Value</b>               |
|--|----------------------------|
| Max. torque Mz   | 3.56 Nm                    |
| Max. static moment Mz  | 3.26 Nm                    |
| Max. permissible torque load Mx as a function of the stroke      | 0.62 Nm                    |
| Max. payload as a function of the stroke at defined distance xs  | 25 N                       |
| Theoretical force at 6 bar, retracting                           | 51 N                       |
| Theoretical force at 6 bar, advancing                            | 68 N                       |
| Moving mass  | 237 g                      |
| Product weight   | 655 g                      |
| Center of gravity of the moving mass as a function of the stroke | 40.6 mm                    |
| Alternative connections  | See product drawing        |
| Pneumatic connection   | M5                         |
| Note on materials  | RoHS-compliant             |
| Cover material   | Wrought aluminum alloy     |
| Seals material   | NBR                        |
| Housing material   | Wrought aluminum alloy     |
| Piston rod material  | High-alloy stainless steel |