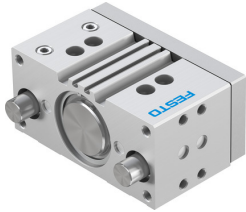


Guided actuators DFM-63-25-P-A-KF-F1A

Part number: 8118954

FESTO



 [General operating condition](#)

Data sheet

Feature	Value
Distance of centre of gravity of payload to yoke plate xs	50 mm
Stroke	25 mm
Piston diameter	63 mm
Drive unit operating mode	Yoke
Cushioning	Elastic cushioning rings/pads at both ends
Mounting position	Any
Guide	Recirculating ball bearing guide
Structural design	Guide
Position sensing	For proximity sensor
Symbol	00991737
Variants	Metals with copper, zinc or nickel by mass as main constituent are excluded from use. Exceptions are nickel in steel, chemically nickel-plated surfaces, printed circuit boards, cables, electrical plug connectors and coils.
Operating pressure	0.1 MPa ... 1 MPa
Operating pressure	1 bar ... 10 bar
Max. speed	0.6 m/s
Mode of operation	Double-acting
Operating medium	Compressed air as per ISO 8573-1:2010 [7:4:4]
Information on operating and pilot media	Operation with oil lubrication possible (required for further use)
Corrosion resistance class (CRC)	0 - No corrosion stress
LABS (PWIS) conformity	VDMA24364-B1/B2-L
Suitability for the production of Li-ion batteries	Metals with more than 1% by mass of copper, zinc or nickel by mass are excluded from use. Exceptions are nickel in steel, chemically nickel-plated surfaces, printed circuit boards, cables, electrical plug connectors and coils
Ambient temperature	-5 °C ... 60 °C
Impact energy in the end positions	1.3 J
Max. force Fy	1487 N
Max. force Fy static	1600 N
Max. force Fz	1487 N
Max. force Fz static	1600 N
Max. torque Mx	92.97 Nm
Max. static moment Mx	100 Nm
Max. torque My	31.98 Nm
Max. static moment My	34.4 Nm
Max. torque Mz	31.98 Nm

Feature	Value
Max. static moment Mz	34.4 Nm
Max. permissible torque load Mx as a function of the stroke	21.98 Nm
Max. payload as a function of the stroke at defined distance xs	235 N
Theoretical force at 6 bar, retracting	1750 N
Theoretical force at 6 bar, advancing	1870 N
Moving mass	2241 g
Product weight	4242 g
Center of gravity of the moving mass as a function of the stroke	27.8 mm
Alternative connections	See product drawing
Pneumatic connection	G1/4
Note on materials	RoHS-compliant
Cover material	Wrought aluminum alloy
Seals material	NBR
Housing material	Wrought aluminum alloy
Piston rod material	High-alloy stainless steel