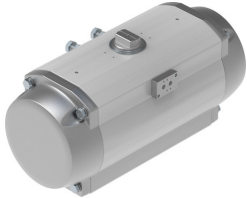


# Quarter turn actuator DFPD-N-2300-RP-90-RD-F1216-R3-EP

Part number: 8068942

FESTO



 General operating condition

## Data sheet

Feature	Value
Size of valve actuator	2300
Flange hole pattern	F1216
Swivel angle	90 deg
End-position adjusting range at 0°	-5 deg ... 5 deg
End-position adjusting range at nominal swivel angle	-5 deg ... 5 deg
Depth shaft connection	48 mm
Standard connection for valve	ISO 5211
Mounting position	Any
Mode of operation	Double-acting
Structural design	Gear rack/pinion
Closing direction	Clockwise closing
Symbol	00991265
Valve connection conforms to standard	VDI/VDE 3845 (NAMUR)
Connection point for positioner and position sensor conforms to standard	VDI/VDE 3845 size AA 3
Devices type according to VDMA 66413	Safety device
Safety function	
Safety integrity level (SIL)	Up to SIL 2 low demand mode up to SIL 3 in a redundant architecture up to SIL 1 high demand mode
Certified for safety function to ISO 13849 and IEC 61508 (SIL)	Product can be used in safety-related parts of control systems up to SIL 2, low demand Product can be used in safety-related parts of control systems up to SIL 1, high demand up to SIL 3 in a redundant architecture
Operating pressure	0.2 MPa ... 0.8 MPa
Operating pressure	2 bar ... 8 bar
Operating pressure	29 psi ... 116 psi
Nominal operating pressure	0.55 MPa
Nominal operating pressure	5.5 bar
Nominal operating pressure	79.75 psi
Maritime classification	See certificate
CE marking (see declaration of conformity)	as per EU explosion protection directive (ATEX)
UKCA marking (see declaration of conformity)	acc. to UK EX instructions
Explosion protection certification outside the EU	EPL Db (GB) EPL Gb (GB)

Feature	Value
Explosion prevention and protection	Zone 1 (ATEX) Zone 1 (UKEX) Zone 2 (ATEX) Zone 21 (ATEX) Zone 21 (UKEX) Zone 22 (ATEX)
Certificate issuing authority	DNV TAP00001CE German Technical Control Board (TÜV) Rheinland 968/V 1106.01/2023
ATEX category gas	II 2G
ATEX category for dust	II 2D
Type of ignition protection for gas	Ex h IIC T4 Gb X
Type of (ignition) protection for dust	Ex h IIIC T105°C Db X
Explosive ambient temperature	-20°C ≤ Ta ≤ +80°C
Operating medium	Compressed air as per ISO 8573-1:2010 [7:4:4]
Information on operating and pilot media	Dew point min. 10 °C below the ambient temperature and temperature of medium Operation with oil lubrication possible (required for further use)
LABS (PWIS) conformity	VDMA24364-B1/B2-L
Storage temperature	-20 °C ... 60 °C
Ambient temperature	-20 °C ... 80 °C
Torque at nominal operating pressure and 0° swivel angle	2233.3 Nm
Torque at nominal operating pressure and 90° swivel angle	2233.3 Nm
Note about the torque	The actuator's operating torque must not be higher than the maximum permissible torque listed in ISO 5211, based on the size of the mounting flange and the coupling.
MTTFd	1126 years
PFH	1.01E-7
PFD	0.00142
Air consumption at 6 bar per cycle 0°-nominal swivel angle-0°	204 l
Product weight	64900 g
Shaft connection	T46
Pneumatic connection	1/4 NPT
Note on materials	RoHS-compliant
Material of sub-base	Coated die-cast aluminum
Cover material	Die-cast aluminum, coated
Seals material	NBR
Housing material	Die-cast aluminum, coated
Material of piston	Die-cast aluminum
Material of bearing	POM
Cam material	Steel
Material of screws	High-alloy stainless steel
Shaft material	High-alloy stainless steel