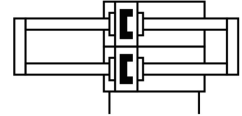
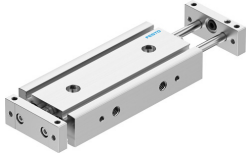


Twin cylinder DGTZ-GF-6-20-J-T-P-A

Part number: 8103468

FESTO



 General operating condition

Data sheet

| Feature | Value |
|---|--|
| Stroke | 20 mm |
| Adjustable end position range/length | 10 mm |
| Piston diameter | 6 mm |
| Drive unit operating mode | Two yokes |
| Cushioning | Elastic cushioning rings/pads at both ends |
| Mounting position | Any |
| Guide | Sliding guide |
| Structural design | Guide |
| Position sensing | For proximity sensor |
| Symbol | 00991243 |
| Operating pressure | 0.2 MPa ... 0.8 MPa |
| Operating pressure | 2 bar ... 8 bar |
| Mode of operation | Double-acting |
| Operating medium | Compressed air as per ISO 8573-1:2010 [7:4:4] |
| Information on operating and pilot media | Operation with oil lubrication possible (required for further use) |
| Corrosion resistance class (CRC) | 1 - Low corrosion stress |
| LABS (PWIS) conformity | VDMA24364 zone III |
| Cleanroom class | Class 6 according to ISO 14644-1 |
| Ambient temperature | -10 °C ... 80 °C |
| Impact energy in the end positions | 0.01 J |
| Max. payload as a function of the stroke at defined distance xs | 2 N |
| Theoretical force at 6 bar, retracting | 18.6 N |
| Theoretical force at 6 bar, advancing | 18.6 N |
| Moving mass | 33.5 g |
| Product weight | 146 g |
| Pneumatic connection | M5 |
| Note on materials | RoHS-compliant |
| Cover material | Wrought aluminum alloy |
| Seals material | NBR |
| Housing material | Wrought aluminum alloy, anodized |
| Piston rod material | High-alloy stainless steel |