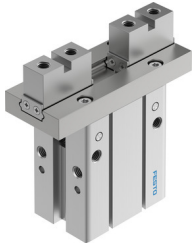


# Parallel gripper DHPC-40-A-S-2

Part number: 8116896

FESTO



 [General operating condition](#)

## Data sheet

Feature	Value
Size	40
Stroke per gripper jaw	15 mm
Max. interchangeability	0.2 mm
Max. gripper jaw angular play ax, ay	0 deg
Max. gripper jaw backlash Sz	0 mm
Rotational symmetry	≤0.2 mm
Pneumatic gripper repetition accuracy	≤0.02 mm
Number of gripper jaws	2
Actuator system	Pneumatic
Mounting position	Any
Mode of operation	Double-acting
Gripper function	Parallel
Gripping force backup	On opening
Structural design	Connection direction at side Flat mounting type for gripper fingers Lever Positively driven motion sequence
Guide	Ball guide
Position sensing	For proximity sensor
Symbol	00991894
Operating pressure	0.1 MPa ... 0.8 MPa
Operating pressure	1 bar ... 8 bar
Operating pressure	14.5 psi ... 116 psi
Max. operating frequency of pneumatic gripper	1 Hz
Min. opening time at 6 bar	158 ms
Min. closing time at 6 bar	153 ms
Operating medium	Compressed air as per ISO 8573-1:2010 [7:4:4]
Information on operating and pilot media	Operation with oil lubrication possible (required for further use)
Corrosion resistance class (CRC)	0 - No corrosion stress
LABS (PWIS) conformity	VDMA24364-B2-L
Ambient temperature	-10 °C ... 60 °C
Gripping force per gripper jaw at 6 bar, opening	777.2 N
Gripping force per gripper jaw at 6 bar, closing	717.2 N
Gripping force per gripper jaw at 6 bar, opening	388.6 N
Gripping force per gripper jaw at 6 bar, closing	358.6 N
Mass moment of inertia	15.84 kgcm <sup>2</sup>

Feature	Value
Maximum force on gripper jaw Fz, static	245 N
Maximum torque on gripper jaw, Mx static	2.3 Nm
Maximum torque on gripper jaw, My static	4.5 Nm
Maximum torque on gripper jaw, Mz static	2.3 Nm
Product weight	1487 g
Type of mounting	Optionally: Direct mounting via through-hole Direct fastening via thread On mounting frame With through-hole and dowel pin With internal thread and dowel pin
Pneumatic connection	M5
Note on materials	RoHS-compliant
Housing material	Aluminum, anodized
Gripper jaw material	High-alloy stainless steel