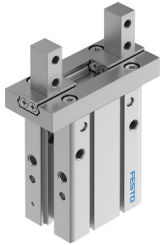


Parallel gripper DHPC-L-25-A-B-1

Part number: 8116871

FESTO



 [General operating condition](#)

Data sheet

Feature	Value
Size	25
Stroke per gripper jaw	11 mm
Max. interchangeability	0.2 mm
Max. gripper jaw angular play ax, ay	0 deg
Max. gripper jaw backlash Sz	0 mm
Rotational symmetry	≤0.2 mm
Pneumatic gripper repetition accuracy	≤0.02 mm
Number of gripper jaws	2
Actuator system	Pneumatic
Mounting position	Any
Mode of operation	Double-acting
Gripper function	Parallel
Gripping force backup	Without
Structural design	Connection direction downwards Lever Side mounting type for gripper fingers Positively driven motion sequence
Guide	Ball guide
Position sensing	For proximity sensor
Symbol	00991894
Variants	Metals with copper, zinc or nickel by mass as main constituent are excluded from use. Exceptions are nickel in steel, chemically nickel-plated surfaces, printed circuit boards, cables, electrical plug connectors and coils.
Operating pressure	0.1 MPa ... 0.8 MPa
Operating pressure	1 bar ... 8 bar
Operating pressure	14.5 psi ... 116 psi
Max. operating frequency of pneumatic gripper	3 Hz
Min. opening time at 6 bar	162 ms
Min. closing time at 6 bar	93 ms
Operating medium	Compressed air as per ISO 8573-1:2010 [7:4:4]
Information on operating and pilot media	Operation with oil lubrication possible (required for further use)
Corrosion resistance class (CRC)	0 - No corrosion stress
LABS (PWIS) conformity	VDMA24364-B2-L

Feature	Value
Suitability for the production of Li-ion batteries	Metals with more than 1% by mass of copper, zinc or nickel by mass are excluded from use. Exceptions are nickel in steel, chemically nickel-plated surfaces, printed circuit boards, cables, electrical plug connectors and coils
Ambient temperature	-10 °C ... 60 °C
Gripping force per gripper jaw at 6 bar, opening	305.3 N
Gripping force per gripper jaw at 6 bar, closing	255.6 N
Gripping force per gripper jaw at 6 bar, opening	152.6 N
Gripping force per gripper jaw at 6 bar, closing	127.8 N
Mass moment of inertia	2.14 kgcm ²
Maximum force on gripper jaw Fz, static	127.5 N
Maximum torque on gripper jaw, Mx static	0.97 Nm
Maximum torque on gripper jaw, My static	1.94 Nm
Maximum torque on gripper jaw, Mz static	0.97 Nm
Product weight	484 g
Type of mounting	Optionally: Direct mounting via through-hole Direct fastening via thread On mounting frame With through-hole and dowel pin With internal thread and dowel pin
Pneumatic connection	M5
Note on materials	RoHS-compliant
Housing material	Aluminum, anodized
Gripper jaw material	High-alloy stainless steel