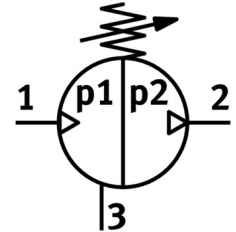
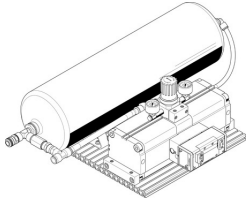


Pressure booster DPA-100-16-CRVZS20

Part number: 552937

FESTO



 General operating condition

Data sheet

| Feature | Value |
|--|--|
| Piston diameter | 100 mm |
| Volume | 20 l |
| Mounting position | Condensate drain downwards |
| Structural design | Twin-piston pressure intensifier with air reservoir with pressure gauge with non-return valve |
| Symbol | 00991432 |
| Pressure gauge | with pressure gauge |
| Output pressure 2 | 0.4 MPa ... 1.6 MPa |
| Outlet pressure 2 | 4 bar ... 16 bar |
| Output pressure 2 | 58 psi ... 232 psi |
| Operating pressure | 0.2 MPa ... 0.8 MPa |
| Operating pressure | 2 bar ... 8 bar |
| Operating pressure | 29 psi ... 116 psi |
| Pressure regulation range MPa | 0.4 MPa ... 1.6 MPa |
| Pressure regulation range | 4 bar ... 16 bar |
| Pressure regulation range psi | 58 psi ... 232 psi |
| Inlet pressure 1 | 2 bar ... 8 bar |
| Inlet pressure 1 MPa | 0.2 MPa ... 0.8 MPa |
| Inlet pressure 1 psi | 29 psi ... 116 psi |
| CE marking (see declaration of conformity) | as per EU pressure equipment directive |
| UKCA marking (see declaration of conformity) | according to UK regulations for pressure equipment |
| Operating medium | Compressed air as per ISO 8573-1:2010 [7:3:4] |
| Information on operating and pilot media | Operation with oil lubrication not possible |
| Corrosion resistance class (CRC) | 2 - Moderate corrosion stress |
| LABS (PWIS) conformity | VDMA24364-B1/B2-L |
| Storage temperature | 5 °C ... 60 °C |
| Ambient temperature | 5 °C ... 60 °C |
| Max. tightening torque for condensate drain | 27 Nm |
| Product weight | 30000 g |
| Type of mounting | With slot nuts |
| Pneumatic connection 1 | QS-16 |

| Feature | Value |
|------------------------|----------------------------|
| Pneumatic connection 2 | KD4 |
| Pneumatic connection 3 | Pneumatic muffler |
| Note on materials | RoHS-compliant |
| Air reservoir material | High-alloy stainless steel |