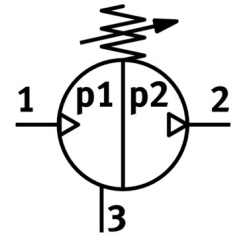
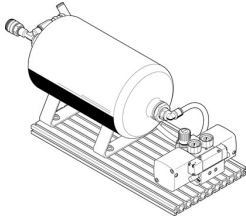


# Pressure booster DPA-40-16-CRVZS5

Part number: 552931

FESTO



 General operating condition

## Data sheet

Feature	Value
Piston diameter	40 mm
Volume	5 l
Mounting position	Condensate drain downwards
Structural design	Twin-piston pressure intensifier with air reservoir with pressure gauge with non-return valve
Symbol	00991432
Pressure gauge	with pressure gauge
Output pressure 2	0.45 MPa ... 1.6 MPa
Outlet pressure 2	4.5 bar ... 16 bar
Output pressure 2	65.25 psi ... 232 psi
Operating pressure	0.25 MPa ... 0.8 MPa
Operating pressure	2.5 bar ... 8 bar
Operating pressure	36.25 psi ... 116 psi
Pressure regulation range MPa	0.45 MPa ... 1.6 MPa
Pressure regulation range	4.5 bar ... 16 bar
Pressure regulation range psi	65.25 psi ... 232 psi
Inlet pressure 1	2 bar ... 8 bar
Inlet pressure 1 MPa	0.2 MPa ... 0.8 MPa
Inlet pressure 1 psi	29 psi ... 116 psi
CE marking (see declaration of conformity)	as per EU pressure equipment directive
UKCA marking (see declaration of conformity)	according to UK regulations for pressure equipment
Operating medium	Compressed air as per ISO 8573-1:2010 [7:3:4]
Information on operating and pilot media	Operation with oil lubrication not possible
Corrosion resistance class (CRC)	2 - Moderate corrosion stress
LABS (PWIS) conformity	VDMA24364-B1/B2-L
Storage temperature	5 °C ... 60 °C
Ambient temperature	5 °C ... 60 °C
Max. tightening torque for condensate drain	27 Nm
Product weight	7300 g
Type of mounting	With slot nuts
Pneumatic connection 1	QS-10

<b>Feature</b>	<b>Value</b>
Pneumatic connection 2	KD4
Pneumatic connection 3	Pneumatic muffler
Note on materials	RoHS-compliant
Air reservoir material	High-alloy stainless steel