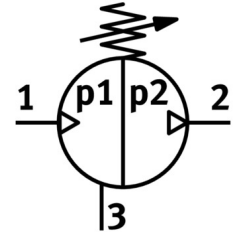
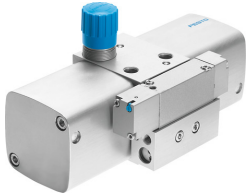



# Pressure booster DPA-40-16

Part number: 537274

FESTO



 General operating condition

## Data sheet

Feature	Value
Piston diameter	40 mm
Mounting position	Any
Structural design	Twin-piston pressure intensifier
Symbol	00991432
Pressure gauge	G1/8 prepared
Output pressure 2	0.45 MPa ... 1.6 MPa
Outlet pressure 2	4.5 bar ... 16 bar
Output pressure 2	65.25 psi ... 232 psi
Operating pressure	0.25 MPa ... 1 MPa
Operating pressure	2.5 bar ... 10 bar
Operating pressure	36.25 psi ... 145 psi
Pressure regulation range MPa	0.45 MPa ... 1.6 MPa
Pressure regulation range	4.5 bar ... 16 bar
Pressure regulation range psi	65.25 psi ... 232 psi
Inlet pressure 1	2.5 bar ... 10 bar
Inlet pressure 1 MPa	0.25 MPa ... 1 MPa
Inlet pressure 1 psi	36.25 psi ... 145 psi
Information on pressure regulation range	If the controller spring is tensioned to the maximum, the maximum output pressure may be exceeded by 40%.
Operating medium	Compressed air as per ISO 8573-1:2010 [7:3:4]
Information on operating and pilot media	Operation with oil lubrication not possible
Corrosion resistance class (CRC)	2 - Moderate corrosion stress
LABS (PWIS) conformity	VDMA24364-B1/B2-L
Storage temperature	5 °C ... 60 °C
Ambient temperature	5 °C ... 60 °C
Product weight	1500 g
Type of mounting	With internal thread
Pneumatic connection 1	G1/4
Pneumatic connection 2	G1/4
Pneumatic connection 3	M7
Note on materials	RoHS-compliant