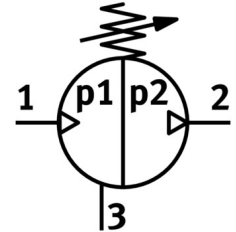
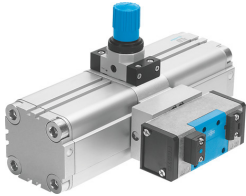



# Pressure booster DPA-63-16

Part number: 193392

FESTO



 General operating condition

## Data sheet

Feature	Value
Piston diameter	63 mm
Mounting position	Any
Structural design	Twin-piston pressure intensifier
Symbol	00991432
Pressure gauge	G1/8 prepared
Output pressure 2	0.4 MPa ... 1.6 MPa
Outlet pressure 2	4 bar ... 16 bar
Output pressure 2	58 psi ... 232 psi
Operating pressure	0.2 MPa ... 1 MPa
Operating pressure	2 bar ... 10 bar
Operating pressure	29 psi ... 145 psi
Pressure regulation range MPa	0.4 MPa ... 1.6 MPa
Pressure regulation range	4 bar ... 16 bar
Pressure regulation range psi	58 psi ... 232 psi
Inlet pressure 1	2 bar ... 10 bar
Inlet pressure 1 MPa	0.2 MPa ... 1 MPa
Inlet pressure 1 psi	29 psi ... 145 psi
Information on pressure regulation range	If the controller spring is tensioned to the maximum, the maximum output pressure may be exceeded by 40%.
Operating medium	Compressed air as per ISO 8573-1:2010 [7:3:4]
Information on operating and pilot media	Operation with oil lubrication not possible
Corrosion resistance class (CRC)	2 - Moderate corrosion stress
LABS (PWIS) conformity	VDMA24364-B1/B2-L
Storage temperature	5 °C ... 60 °C
Ambient temperature	5 °C ... 60 °C
Product weight	6000 g
Type of mounting	With internal thread
Pneumatic connection 1	G3/8
Pneumatic connection 2	G3/8
Pneumatic connection 3	G3/8
Note on materials	RoHS-compliant