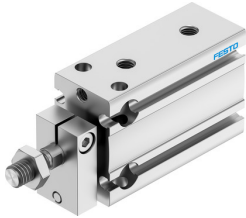


# Compact air cylinder DPDM-Q-16-10-PA

Part number: 4834261

FESTO



 [General operating condition](#)

## Data sheet

| Feature                                  | Value  |
|--|--|
| Stroke                                   | 10 mm  |
| Piston diameter                          | 16 mm  |
| Cushioning                               | Elastic cushioning rings/pads at both ends                         |
| Mounting position                        | Any  |
| Mode of operation                        | Double-acting  |
| Structural design                        | Piston<br>Piston rod<br>Profile barrel                             |
| Position sensing                         | For proximity sensor   |
| Symbol                                   | 00991737   |
| Variants                                 | Piston rod at one end  |
| Protection against torsion/guide         | Guide rod with yoke  |
| Operating pressure                       | 0.15 MPa ... 0.8 MPa   |
| Operating pressure                       | 1.5 bar ... 8 bar  |
| Operating medium                         | Compressed air as per ISO 8573-1:2010 [7:4:4]                      |
| Information on operating and pilot media | Operation with oil lubrication possible (required for further use) |
| Corrosion resistance class (CRC)         | 2 - Moderate corrosion stress                                      |
| LABS (PWIS) conformity                   | VDMA24364-B2-L   |
| Cleanroom class                          | Class 6 according to ISO 14644-1                                   |
| Ambient temperature                      | -10 °C ... 80 °C   |
| Theoretical force at 6 bar               | 121 N  |
| Theoretical force at 6 bar, retracting   | 104 N  |
| Theoretical force at 6 bar, advancing    | 121 N  |
| Moving mass at 0 mm stroke               | 27 g   |
| Additional moving mass per 10 mm stroke  | 2.8 g  |
| Basic weight with 0 mm stroke            | 75 g   |
| Additional weight per 10 mm stroke       | 13.5 g   |
| Type of mounting                         | Optionally:<br>With through-hole<br>With internal thread           |
| Pneumatic connection                     | M5   |
| Note on materials                        | RoHS-compliant   |
| Cover material                           | Wrought aluminum alloy   |
| Seals material                           | TPE-U(PU)  |
| Housing material                         | Wrought aluminum alloy, anodized                                   |
| Piston rod material                      | High-alloy stainless steel   |