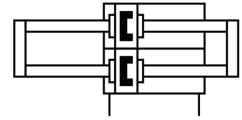
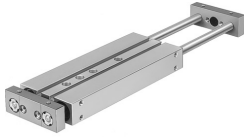



# Dual piston rod cylinder DPZJ-10-25-P-A-KF-S2

Part number: 162017

FESTO



 General operating condition

## Data sheet

Feature	Value
Stroke	25 mm
Adjustable end position range/length	10 mm
Piston diameter	10 mm
Drive unit operating mode	Yoke
Cushioning	Elastic cushioning rings/pads at both ends
Mounting position	Any
Guide	Recirculating ball bearing guide
Structural design	Guide
Position sensing	For proximity sensor
Symbol	00991243
Variants	Through piston rod
Operating pressure	0.25 MPa ... 1 MPa
Operating pressure	2.5 bar ... 10 bar
Max. speed	1 m/s
Mode of operation	Double-acting
Operating medium	Compressed air as per ISO 8573-1:2010 [7:4:4]
Information on operating and pilot media	Operation with oil lubrication possible (required for further use)
Corrosion resistance class (CRC)	0 - No corrosion stress
LABS (PWIS) conformity	VDMA24364-B1/B2-L
Ambient temperature	-20 °C ... 80 °C
Impact energy in the end positions	0.08 J
Theoretical force at 6 bar, retracting	60 N
Theoretical force at 6 bar, advancing	60 N
Alternative connections	See product drawing
Pneumatic connection	M5
Cover material	Wrought aluminum alloy
Seals material	NBR
Housing material	Wrought aluminum alloy
Piston rod material	Case-hardened steel