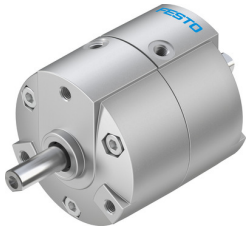


Rotary actuator DRVS-16-90-P

Part number: 1845713

FESTO



[PDF](#) General operating condition

Data sheet

Feature	Value
Size	16
Cushioning angle	0.5 deg
Swivel angle	0 deg ... 90 deg
Permissible stop radius	17 mm
Cushioning	Elastic cushioning rings/pads at both ends
Mounting position	Any
Mode of operation	Double-acting
Structural design	Rotary vane
Position sensing	For proximity sensor
Symbol	00991265
Variants	Spigot shaft
Operating pressure	0.25 MPa ... 0.8 MPa
Operating pressure	2.5 bar ... 8 bar
Max. swivel frequency at 6 bar	3 Hz
Repetition accuracy	1 deg
Operating medium	Compressed air as per ISO 8573-1:2010 [7:4:4]
Information on operating and pilot media	Operation with oil lubrication possible (required for further use)
Corrosion resistance class (CRC)	1 - Low corrosion stress
LABS (PWIS) conformity	VDMA24364-B2-L
Cleanroom class	Class 6 according to ISO 14644-1
Ambient temperature	0 °C ... 60 °C
Max. stop force	160 N
Max. axial force	25 N
Max. radial force	30 N
Theoretical torque at 6 bar	2 Nm
Permissible mass moment of inertia	0.01 kgm ²
Product weight	272 g
Type of mounting	With internal thread
Pneumatic connection	M5
Note on materials	RoHS-compliant
Drive shaft material	Steel, nickel-plated
Seals material	TPE-U(PU)
Housing material	Die cast aluminum, painted