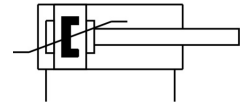
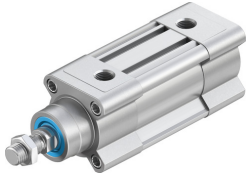


ISO cylinder DSBC-40-20-PPSA-N3

Part number: 2123780

FESTO



 [General operating condition](#)

Data sheet

| Feature | Value |
|--|--|
| Stroke | 20 mm |
| Piston diameter | 40 mm |
| Piston rod thread | M12x1.25 |
| Cushioning | Self-adjusting pneumatic end-position cushioning |
| Mounting position | Any |
| Conforms to standard | ISO 15552 |
| Piston rod end | External thread |
| Structural design | Piston Piston rod Profile barrel |
| Position sensing | For proximity sensor |
| Symbol | 00992970 |
| Variants | Piston rod at one end |
| Operating pressure | 0.06 MPa ... 1.2 MPa |
| Operating pressure | 0.6 bar ... 12 bar |
| Mode of operation | Double-acting |
| Operating medium | Compressed air as per ISO 8573-1:2010 [7:4:4] |
| Information on operating and pilot media | Operation with oil lubrication possible (required for further use) |
| Corrosion resistance class (CRC) | 2 - Moderate corrosion stress |
| LABS (PWIS) conformity | VDMA24364-B1/B2-L |
| Cleanroom class | Class 6 according to ISO 14644-1 |
| Ambient temperature | -20 °C ... 80 °C |
| Impact energy in the end positions | 0.7 J |
| Cushioning length | 19 mm |
| Theoretical force at 6 bar, retracting | 633 N |
| Theoretical force at 6 bar, advancing | 754 N |
| Moving mass at 0 mm stroke | 205 g |
| Additional moving mass per 10 mm stroke | 16 g |
| Basic weight with 0 mm stroke | 740 g |
| Additional weight per 10 mm stroke | 37 g |
| Type of mounting | Optionally: With internal thread With accessories |
| Pneumatic connection | G1/4 |
| Note on materials | RoHS-compliant |
| Cover material | Die-cast aluminum, coated |
| Piston seal material | TPE-U(PU) |

| Feature | Value |
|-----------------------------|---|
| Material of piston | Wrought aluminum alloy |
| Piston rod material | High-alloy steel |
| Piston rod wiper material | TPE-U(PU) |
| Buffer seal material | TPE-U(PU) |
| Cushion piston material | POM |
| Material of cylinder barrel | Wrought aluminum alloy, smooth-anodized |
| Nut material | Steel, galvanized |
| Material of bearing | POM |
| Flange screws material | Steel, galvanized |