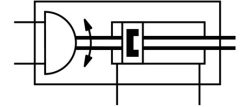
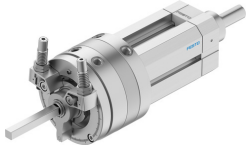


# Swivel actuator unit DSL-32-80-270-CC-A-S20-B

Part number: 556520

FESTO



 [General operating condition](#)

## Data sheet

Feature	Value
Cushioning angle	12 deg
Adjustment range of swivel angle	0 deg ... 246 deg
Stroke	80 mm
Piston diameter	32 mm
Swivel angle	0 deg ... 246 deg
Cushioning	Pneumatic shock absorber at both ends Elastic cushioning rings/pads at both ends
Mounting position	Any
Precision adjustment	-3 deg
Mode of operation	Double-acting
Structural design	Rotary vane
Position sensing	For proximity sensor
Symbol	00991269
Variants	Through, hollow piston rod
Protection against torsion/guide	With plain-bearing guide
Operating pressure	2.5 bar ... 8 bar
Max. impact velocity	0.5 m/s
Max. swivel frequency at 6 bar	0.7 Hz
Swivel angle backlash	2 deg
Repetition accuracy	0.1 deg
Operating medium	Compressed air as per ISO 8573-1:2010 [7:4:4]
Information on operating and pilot media	Operation with oil lubrication possible (required for further use)
Corrosion resistance class (CRC)	1 - Low corrosion stress
LABS (PWIS) conformity	VDMA24364-B2-L
Ambient temperature	-10 °C ... 60 °C
Dynamic load torque	0.8 Nm
Theoretical force at 6 bar, retracting	294 N
Theoretical force at 6 bar, advancing	422.5 N
Theoretical torque at 6 bar	10 Nm
Permissible mass moment of inertia	0.0021 kgm <sup>2</sup>
Product weight	3000 g
Basic weight with 0 mm stroke	3000 g
Additional weight per 10 mm stroke	109 g
Type of mounting	Optionally: Clamped in T slot With external thread

<b>Feature</b>	<b>Value</b>
Pneumatic connection	G1/8
Cover material	Wrought aluminum alloy Anodized
Seals material	TPE-U(PU)
Housing material	Wrought aluminum alloy Smooth anodized
Piston rod material	Tempered steel