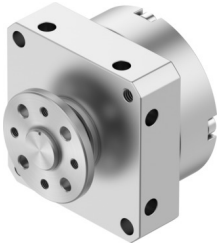


Rotary actuator DSM-10-240-P-FW

Part number: 185942

FESTO



 [General operating condition](#)

Data sheet

Feature	Value
Size	10
Cushioning angle	0.5 deg
Swivel angle	0 deg ... 240 deg
Cushioning	Elastic cushioning rings/pads at both ends
Mounting position	Any
Mode of operation	Double-acting
Structural design	Rotary vane
Position sensing	None
Symbol	00991265
Operating pressure	2.5 bar ... 8 bar
Max. swivel frequency at 6 bar	2 Hz
Operating medium	Compressed air as per ISO 8573-1:2010 [7:4:4]
Information on operating and pilot media	Operation with oil lubrication possible (required for further use)
LABS (PWIS) conformity	VDMA24364-B1/B2-L
Ambient temperature	0 °C ... 60 °C
Theoretical torque at 6 bar	0.85 Nm
Permissible mass moment of inertia	0.0026 kgm ²
Product weight	150 g
Type of mounting	With internal thread
Pneumatic connection	M3
Note on materials	RoHS-compliant
Drive shaft material	High-alloy stainless steel
Seals material	TPE-U(PU)
Housing material	Aluminum Anodized