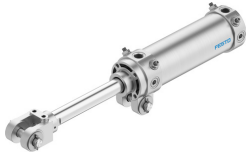


Hinge cylinder DWA-50-100-Y-AB

Part number: 549745

FESTO



 [General operating condition](#)

Data sheet

| Feature | Value |
|--|---|
| Stroke | 100 mm |
| Piston diameter | 50 mm |
| Piston rod thread | M16x1.5 |
| Wide rod clevis/swivel mounting | 16 mm |
| Cushioning | Pneumatic cushioning, adjustable at both ends |
| Mounting position | Any |
| Structural design | Piston Piston rod with rod clevis Swivel mounting on bearing cap Cylinder barrel |
| Velocity control | Integrated flow control at both ends |
| Position sensing | For proximity sensor |
| Piston rod end | External thread with rod clevis |
| Operating pressure | 1 bar ... 10 bar |
| Mode of operation | Double-acting |
| Operating medium | Compressed air as per ISO 8573-1:2010 [7:4:4] |
| Information on operating and pilot media | Operation with oil lubrication possible (required for further use) |
| Corrosion resistance class (CRC) | 0 - No corrosion stress |
| LABS (PWIS) conformity | VDMA24364-B2-L |
| Ambient temperature | -10 °C ... 60 °C |
| Impact energy in the end positions | 0.7 J |
| Cushioning length | 20 mm |
| Theoretical force at 6 bar, retracting | 990 N |
| Theoretical force at 6 bar, advancing | 1178 N |
| Moving mass at 0 mm stroke | 664 g |
| Additional moving mass per 10 mm stroke | 25 g |
| Basic weight with 0 mm stroke | 1338 g |
| Additional weight per 10 mm stroke | 37 g |
| Alternative connections | See product drawing |
| Type of mounting | With swivel mounting on bearing cap With accessories |
| Pneumatic connection | Rc1/4 |
| Rod clevis material | Cast steel Tempered steel |
| Note on materials | RoHS-compliant |
| Wiper material | Bronze |

| Feature | Value |
|-----------------------------|--------------------------------------|
| Cover material | Die-cast aluminum Anodized |
| Seals material | NBR |
| Piston rod material | Tempered steel Hard-chrome-plated |
| Material of cylinder barrel | Wrought aluminum alloy Anodized |