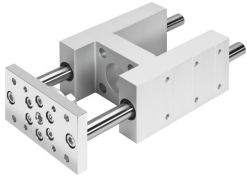


Guide unit EAGF-V2-KF-100-100

Part number: 1725850

FESTO



 General operating condition

Data sheet

Feature	Value
Size	100
Stroke	100 mm
Reversing backlash	0 µm
Mounting position	Any
Guide	Recirculating ball bearing guide
Structural design	Guide
Corrosion resistance class (CRC)	0 - No corrosion stress
LABS (PWIS) conformity	VDMA24364-B2-L
Ambient temperature	-20 °C ... 80 °C
Max. force F _y	2300 N
Max. force F _y static	3120 N
Max. force F _z	2300 N
Max. force F _z static	3120 N
Max. torque M _x	198 Nm
Max. static moment M _x	268 Nm
Max. torque M _y	197 Nm
Max. static moment M _y	267 Nm
Max. torque M _z	197 Nm
Max. static moment M _z	267 Nm
Displacement force	40 N
Moving mass	6892 g
Product weight	14023 g
Center of gravity of moving mass with 0 mm stroke	47 mm
Center of gravity of moving mass with 10 mm stroke	3.6 mm
Type of mounting	With internal thread
Note on materials	RoHS-compliant
Material of guide component	Tempered steel
Housing material	Wrought aluminum alloy Anodized
Material of yoke plate	Steel