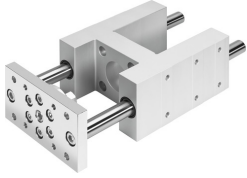


# Guide unit EAGF-V2-KF-100-400

Part number: 1725853

FESTO



 General operating condition

## Data sheet

Feature	Value
Size	100
Stroke	400 mm
Reversing backlash	0 µm
Mounting position	Any
Guide	Recirculating ball bearing guide
Structural design	Guide
Corrosion resistance class (CRC)	0 - No corrosion stress
LABS (PWIS) conformity	VDMA24364-B2-L
Ambient temperature	-20 °C ... 80 °C
Max. force Fy	2300 N
Max. force Fy static	3120 N
Max. force Fz	2300 N
Max. force Fz static	3120 N
Max. torque Mx	198 Nm
Max. static moment Mx	268 Nm
Max. torque My	197 Nm
Max. static moment My	267 Nm
Max. torque Mz	197 Nm
Max. static moment Mz	267 Nm
Displacement force	40 N
Moving mass	9204 g
Product weight	16303 g
Center of gravity of moving mass with 0 mm stroke	47 mm
Center of gravity of moving mass with 10 mm stroke	3.6 mm
Type of mounting	With internal thread
Note on materials	RoHS-compliant
Material of guide component	Tempered steel
Housing material	Wrought aluminum alloy Anodized
Material of yoke plate	Steel