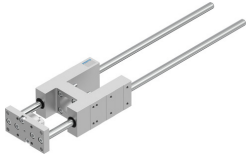


Guide unit EAGF-V2-KF-32-320

Part number: 2782885

FESTO



 General operating condition

Data sheet

Feature	Value
Size	32
Stroke	320 mm
Reversing backlash	0 µm
Mounting position	Any
Guide	Recirculating ball bearing guide
Structural design	Guide
Corrosion resistance class (CRC)	0 - No corrosion stress
LABS (PWIS) conformity	VDMA24364-B2-L
Ambient temperature	-20 °C ... 80 °C
Max. force Fy	750 N
Max. force Fy static	1020 N
Max. force Fz	750 N
Max. force Fz static	1020 N
Max. torque Mx	28 Nm
Max. static moment Mx	38 Nm
Max. torque My	34 Nm
Max. static moment My	46 Nm
Max. torque Mz	34 Nm
Max. static moment Mz	46 Nm
Displacement force	15 N
Moving mass	1300 g
Product weight	2261 g
Center of gravity of moving mass with 0 mm stroke	30 mm
Center of gravity of moving mass with 10 mm stroke	4.1 mm
Type of mounting	With internal thread
Note on materials	RoHS-compliant
Material of guide component	Tempered steel
Housing material	Wrought aluminum alloy Anodized
Material of yoke plate	Steel