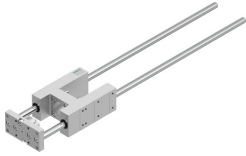


Guide unit EAGF-V2-KF-32-400

Part number: 2782923

FESTO



 General operating condition

Data sheet

Feature	Value
Size	32
Stroke	400 mm
Reversing backlash	0 µm
Mounting position	Any
Guide	Recirculating ball bearing guide
Structural design	Guide
Corrosion resistance class (CRC)	0 - No corrosion stress
LABS (PWIS) conformity	VDMA24364-B2-L
Ambient temperature	-20 °C ... 80 °C
Max. force F _y	750 N
Max. force F _y static	1020 N
Max. force F _z	750 N
Max. force F _z static	1020 N
Max. torque M _x	28 Nm
Max. static moment M _x	38 Nm
Max. torque M _y	34 Nm
Max. static moment M _y	46 Nm
Max. torque M _z	34 Nm
Max. static moment M _z	46 Nm
Displacement force	15 N
Moving mass	1444 g
Product weight	2405 g
Center of gravity of moving mass with 0 mm stroke	30 mm
Center of gravity of moving mass with 10 mm stroke	4.1 mm
Type of mounting	With internal thread
Note on materials	RoHS-compliant
Material of guide component	Tempered steel
Housing material	Wrought aluminum alloy Anodized
Material of yoke plate	Steel