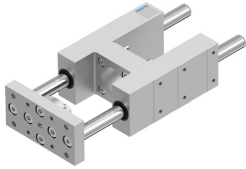


# Guide unit EAGF-V2-KF-40-100

Part number: 2782939

FESTO



 General operating condition

## Data sheet

Feature	Value
Size	40
Stroke	100 mm
Reversing backlash	0 µm
Mounting position	Any
Guide	Recirculating ball bearing guide
Structural design	Guide
Corrosion resistance class (CRC)	0 - No corrosion stress
LABS (PWIS) conformity	VDMA24364-B2-L
Ambient temperature	-20 °C ... 80 °C
Max. force Fy	1000 N
Max. force Fy static	1260 N
Max. force Fz	1000 N
Max. force Fz static	1260 N
Max. torque Mx	44 Nm
Max. static moment Mx	55 Nm
Max. torque My	52 Nm
Max. static moment My	65 Nm
Max. torque Mz	52 Nm
Max. static moment Mz	65 Nm
Displacement force	15 N
Moving mass	1603 g
Product weight	2837 g
Center of gravity of moving mass with 0 mm stroke	38 mm
Center of gravity of moving mass with 10 mm stroke	4.2 mm
Type of mounting	With internal thread
Note on materials	RoHS-compliant
Material of guide component	Tempered steel
Housing material	Wrought aluminum alloy Anodized
Material of yoke plate	Steel