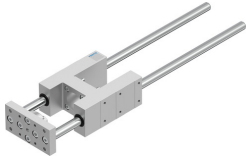


# Guide unit EAGF-V2-KF-40-320

Part number: 2783047

FESTO



 General operating condition

## Data sheet

| Feature  | Value                              |
|--|------------------------------------|
| Size   | 40                                 |
| Stroke   | 320 mm                             |
| Reversing backlash                                 | 0 µm                               |
| Mounting position                                  | Any                                |
| Guide  | Recirculating ball bearing guide   |
| Structural design                                  | Guide                              |
| Corrosion resistance class (CRC)                   | 0 - No corrosion stress            |
| LABS (PWIS) conformity                             | VDMA24364-B2-L                     |
| Ambient temperature                                | -20 °C ... 80 °C                   |
| Max. force F <sub>y</sub>                          | 1000 N                             |
| Max. force F <sub>y</sub> static                   | 1260 N                             |
| Max. force F <sub>z</sub>                          | 1000 N                             |
| Max. force F <sub>z</sub> static                   | 1260 N                             |
| Max. torque M <sub>x</sub>                         | 44 Nm                              |
| Max. static moment M <sub>x</sub>                  | 55 Nm                              |
| Max. torque M <sub>y</sub>                         | 52 Nm                              |
| Max. static moment M <sub>y</sub>                  | 65 Nm                              |
| Max. torque M <sub>z</sub>                         | 52 Nm                              |
| Max. static moment M <sub>z</sub>                  | 65 Nm                              |
| Displacement force                                 | 15 N                               |
| Moving mass  | 2307 g                             |
| Product weight                                     | 3541 g                             |
| Center of gravity of moving mass with 0 mm stroke  | 38 mm                              |
| Center of gravity of moving mass with 10 mm stroke | 4.2 mm                             |
| Type of mounting                                   | With internal thread               |
| Note on materials                                  | RoHS-compliant                     |
| Material of guide component                        | Tempered steel                     |
| Housing material                                   | Wrought aluminum alloy<br>Anodized |
| Material of yoke plate                             | Steel                              |