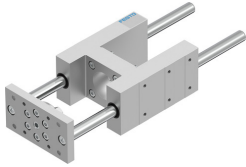



# Guide unit EAGF-V2-KF-63-200

Part number: 1725843

FESTO



 General operating condition

## Data sheet

Feature	Value
Size	63
Stroke	200 mm
Reversing backlash	0 µm
Mounting position	Any
Guide	Recirculating ball bearing guide
Structural design	Guide
Corrosion resistance class (CRC)	0 - No corrosion stress
LABS (PWIS) conformity	VDMA24364-B2-L
Ambient temperature	-20 °C ... 80 °C
Max. force Fy	1260 N
Max. force Fy static	1600 N
Max. force Fz	1260 N
Max. force Fz static	1600 N
Max. torque Mx	75 Nm
Max. static moment Mx	95 Nm
Max. torque My	90 Nm
Max. static moment My	115 Nm
Max. torque Mz	90 Nm
Max. static moment Mz	115 Nm
Displacement force	15 N
Moving mass	3539 g
Product weight	6505 g
Center of gravity of moving mass with 0 mm stroke	48 mm
Center of gravity of moving mass with 10 mm stroke	4.1 mm
Type of mounting	With internal thread
Note on materials	RoHS-compliant
Material of guide component	Tempered steel
Housing material	Wrought aluminum alloy Anodized
Material of yoke plate	Steel